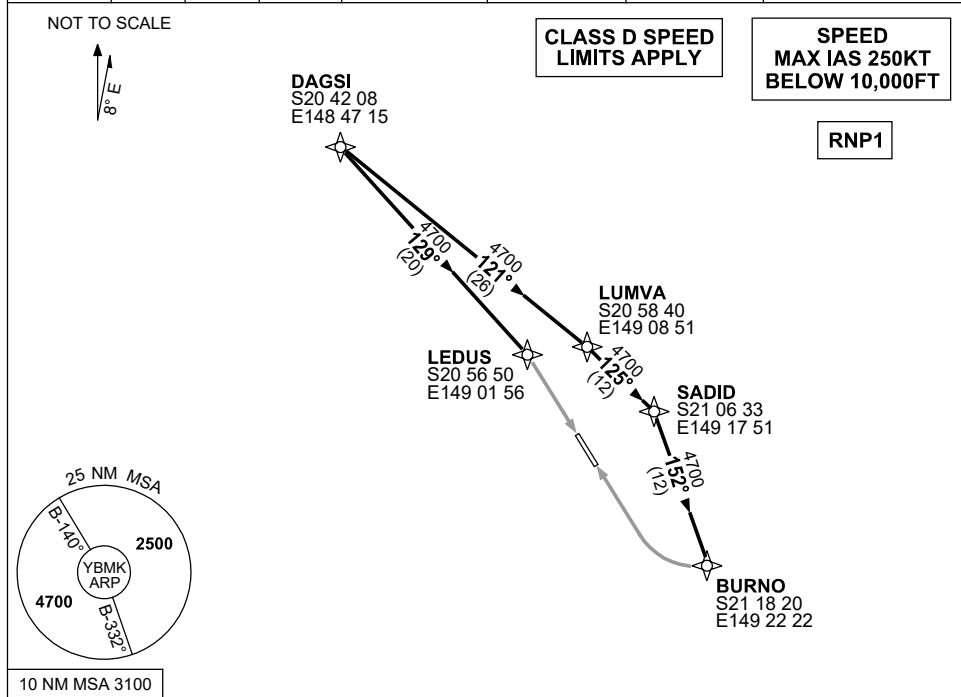


**STANDARD INSTRUMENT ARRIVAL (STAR)
DAGSI ONE ARRIVAL (RNAV)
MACKAY, QLD (YBMK)**

1 DEC 2022

ATIS 112.7 128.0	SMC 121.7	TWR 124.5	CORAL APP (MK) 125.65	CTAF+AFRU (AH) 124.5	AFRU+PAL (AH) 124.5	FIA (AH) BN CEN 135.5	Bearings are Magnetic Elevations in FEET AMSL
---------------------	--------------	--------------	-----------------------------	-------------------------	------------------------	--------------------------	--



ARRIVAL: DAGSI ONE

RWY 14

- From DAGSI track 129° to LEDUS
- Track via RNP RWY 14

RWY 32

- From DAGSI track 121° to LUMVA
- Turn RIGHT, Track 125° to SADID
- Turn RIGHT, Track 152° to BURNO
- Track via RNP RWY 32

COMMUNICATIONS FAILURE: PROCEDURE IN IMC

- Squawk 7600, comply with vertical navigation requirements, but not below MSA.
- Track via the latest STAR clearance to the nominated runway, then fly the most suitable approach in accordance with ERSA EMERG Section 1.5.

Changes: CORAL APP FREQUENCY.

BMKSR02-173