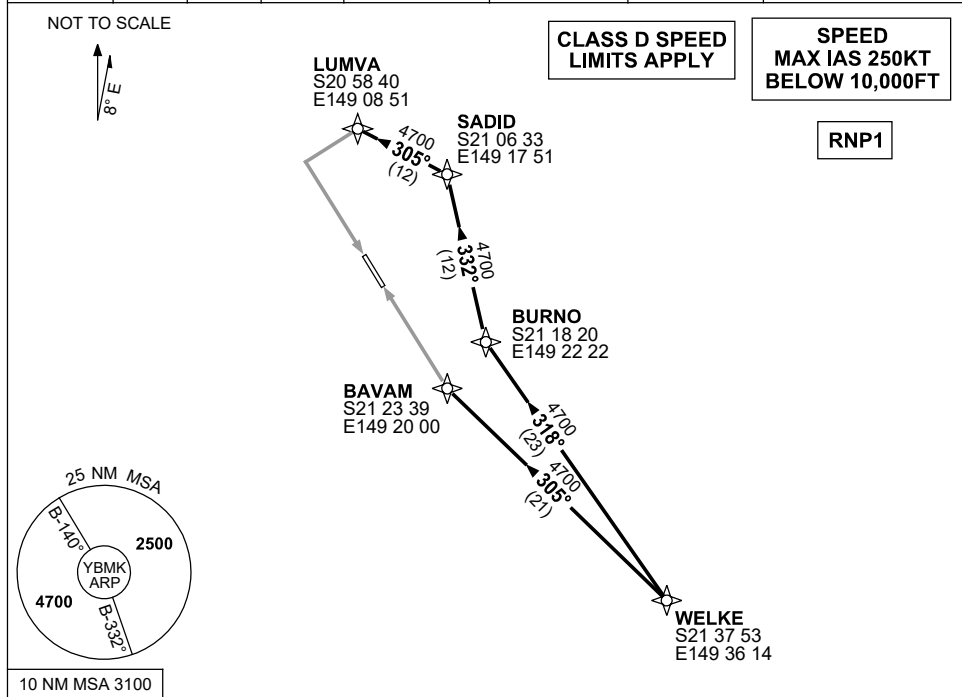


**STANDARD INSTRUMENT ARRIVAL (STAR)  
WELKE ONE ARRIVAL (RNAV)  
MACKAY, QLD (YBMK)**

**1 DEC 2022**

ATIS 112.7 128.0	SMC 121.7	TWR 124.5	CORAL APP (MK) 125.65	CTAF+AFRU (AH) 124.5	AFRU+PAL (AH) 124.5	FIA (AH) BN CEN 135.5	Bearings are Magnetic Elevations in FEET AMSL
---------------------	--------------	--------------	-----------------------------	-------------------------	------------------------	--------------------------	--



**ARRIVAL: WELKE ONE**

**RWY 14**

- From WELKE track 318° to BURNO
- Turn RIGHT, track 332° to SADID
- Turn LEFT, track 305° to LUMVA
- Track via RNP RWY 14

**RWY 32**

- From WELKE track 305° to BAVAM
- Track via RNP RWY 32

**COMMUNICATIONS FAILURE: PROCEDURE IN IMC**

- Squawk 7600, comply with vertical navigation requirements, but not below MSA.
- Track via the latest STAR clearance to the nominated runway, then fly the most suitable approach in accordance with ERSA EMERG Section 1.5.

Changes: CORAL APP FREQUENCY.

BMKSR01-173