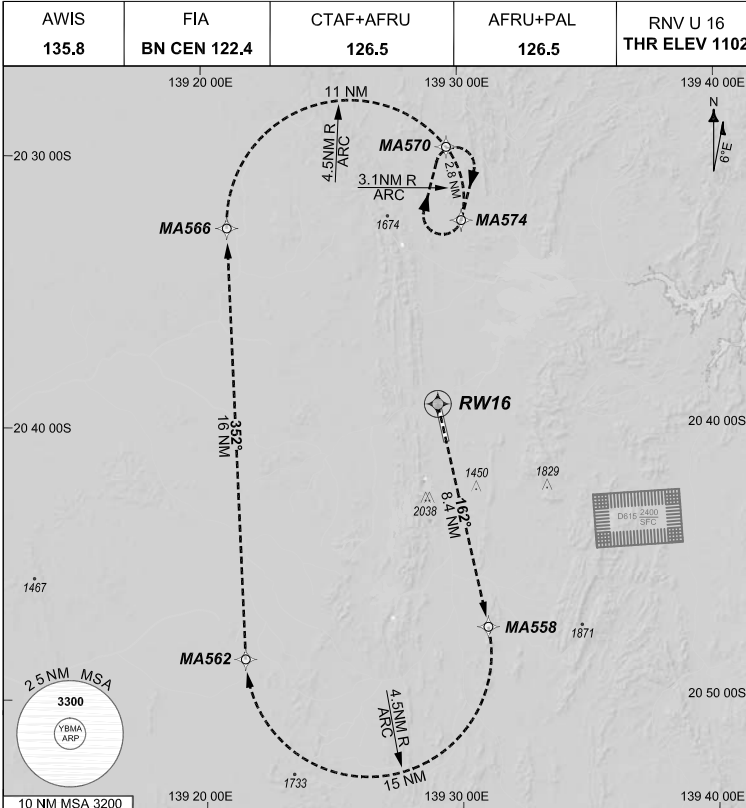


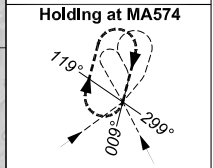
**FOR CASA APPROVED  
OPERATORS ONLY  
USE QNH**

**1 DEC 2022**

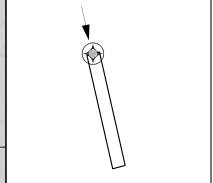
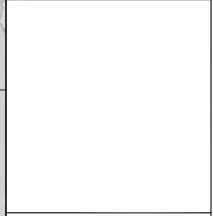
GE PROPRIETARY INFORMATION



**RNP AR APCH**  
- RF RQ  
- YBMA ACT QNH RQ  
- YBMA ACT TEMP RQ  
- PROC TEMP RANGE  
-2°C TO +45°C



TR INTRN TIME	MIN ALT	DME LMT
189° Right	1'	3300



**AD ELEV 1121**  
Bearings are Magnetic  
Elevations in FEET AMSL

**ENGINE OUT MISSED APPROACH:**

Track via the RNP AR Engine Out Missed Approach track to MA574 and hold as published. Acceleration altitude 2200FT QNH (1000FT AGL). Maximum holding speed 230 KIAS. EO hold only.

202208041711 COPYRIGHT © 2022 NAVERUS, INC. USA

Changes: NEW

BMAGN05-173

**DO NOT USE FOR NAVIGATION**

Prepared by GE Aviation

