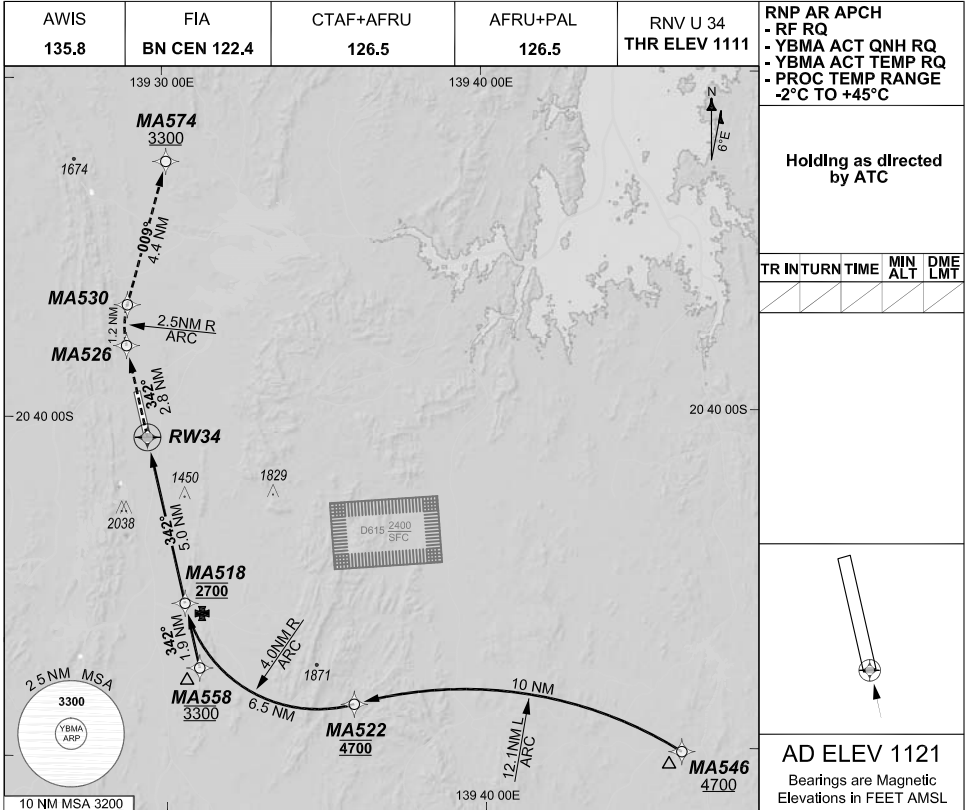


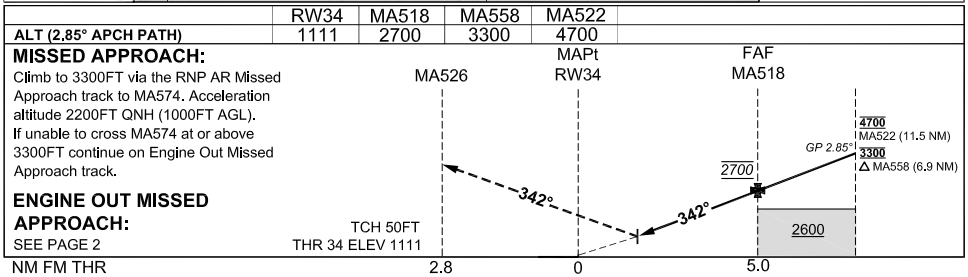
**FOR CASA APPROVED  
OPERATORS ONLY  
USE QNH**

**1 DEC 2022**

GE PROPRIETARY INFORMATION



202208051421 COPYRIGHT 2022 NAVERUS, INC. USA



**NOTES**

1. Lateral transition to MAP must not be initiated prior to DAVH PSN.
2. APCH Path does not coincide with PAPI glide path 3°.
3. MIN MAP GRAD (AE) for RNP 0.15 and RNP 0.20 3.6% to 3000FT. RNP 0.30 3.5% to 3300 FT.

CATEGORY	A	B	C	D
RNP (0.30)			DA(H) <b>1491</b> (380 - 2.1)	DA(H) <b>1491</b> (380 - 2.1)
RNP (0.20)			DA(H) <b>1453</b> (342 - 1.8)	DA(H) <b>1453</b> (342 - 1.8)
RNP (0.15)		N/A	DA(H) <b>1444</b> (333 - 1.8)	DA(H) <b>1444</b> (333 - 1.8)
CIRCLING			NOT AUTHORISED	NOT AUTHORISED
ALTERNATE				

Changes: Chart reformatting, RNP 0.30 DA/VIS change, Glide path note, Added D615 danger area.

BMAGN04-173

**DO NOT USE FOR NAVIGATION**

Prepared by GE Aviation

