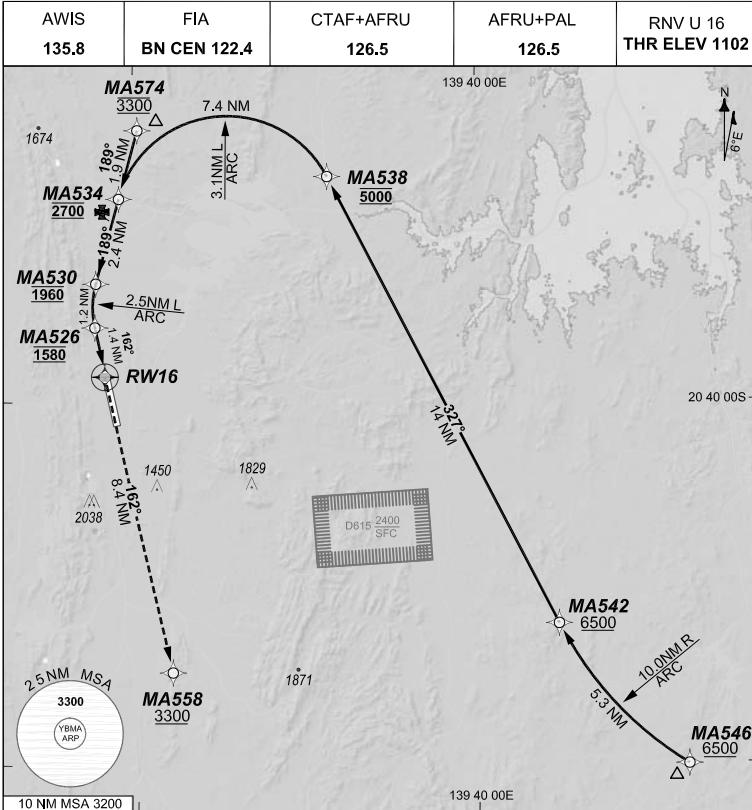


**FOR CASA APPROVED
OPERATORS ONLY
USE QNH**

1 DEC 2022

GE PROPRIETARY INFORMATION

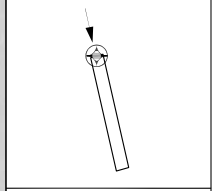
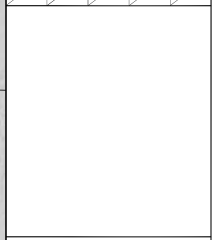
202208051420 COPYRIGHT 2022 NAVERUS, INC. USA



RNP AR APCH
- RF RQ
- YBMA ACT QNH RQ
- YBMA ACT TEMP RQ
- PROC TEMP RANGE
-2°C TO +45°C

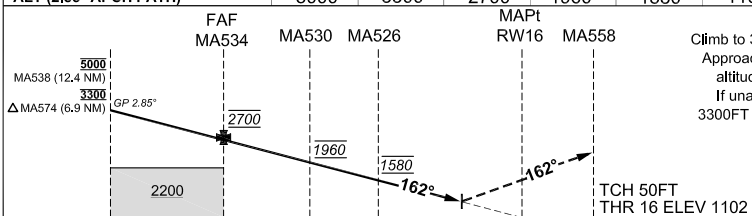
**Holding as directed
by ATC**

TR	INTURN TIME	MIN ALT	DME LMT



AD ELEV 1121
Bearings are Magnetic
Elevations in FEET AMSL

	MA538	MA574	MA534	MA530	MA526	RW16
ALT (2.85° APCH PATH)	5000	3300	2700	1960	1580	1102



MISSED APPROACH:
Climb to 3300FT via the RNP AR Missed Approach track to MA558. Acceleration altitude 2200FT QNH (1000FT AGL). If unable to cross MA558 at or above 3300FT continue on Engine Out Missed Approach track.

ENGINE OUT MISSED APPROACH:
SEE PAGE 2

NOTES

1. Lateral transition to MAP must not be initiated prior to DA/H PSN.
2. APCH Path does not coincide with PAPI glide path 3°.
3. MIN MAP GRAD (AE) for RNP 0.20 3.2% and RNP 0.30 3.0% to 3300 FT.

CATEGORY	A	B	C	D
RNP (0.30)	N/A		DA(H) 1675 (573 - 3.3)	DA(H) 1675 (573 - 3.3)
RNP (0.20)			DA(H) 1621 (519 - 2.9)	DA(H) 1621 (519 - 2.9)
CIRCLING			NOT AUTHORISED	NOT AUTHORISED
ALTERNATE				

Changes: Chart reformatting, Glide path note, Added D615 danger area.

BMAGN03-173

DO NOT USE FOR NAVIGATION

Prepared by GE Aviation

