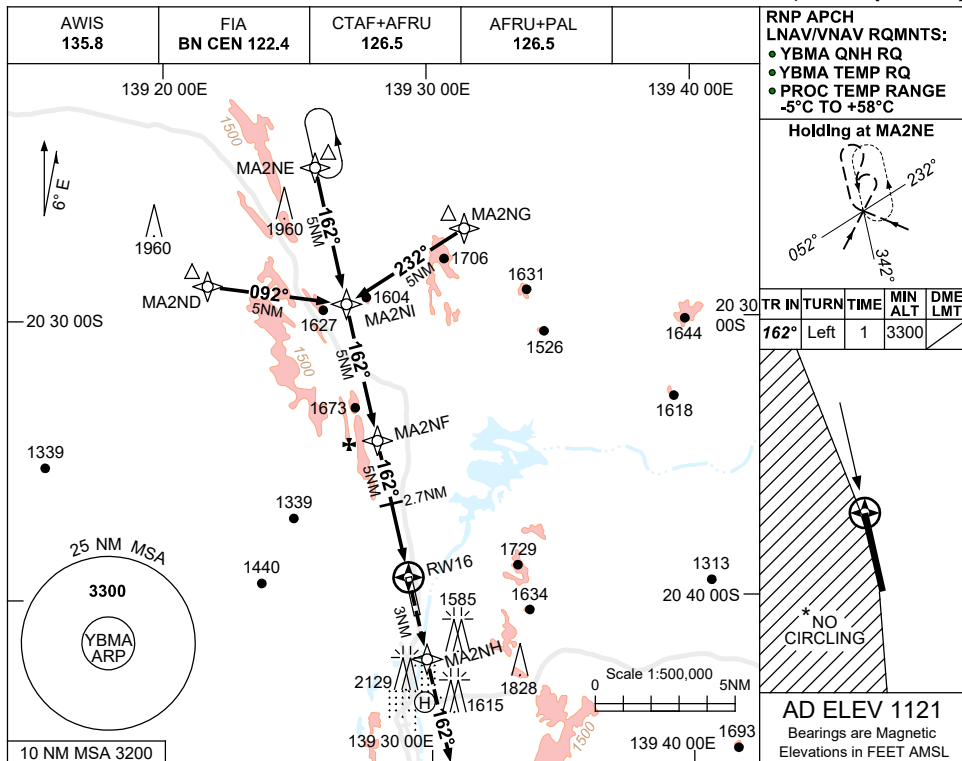


USE QNH

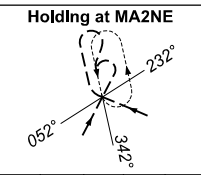
RNP Z RWY 16

15 JUN 2023

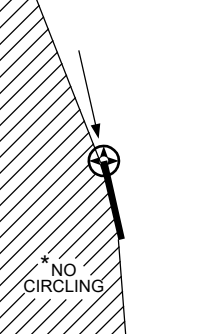
MOUNT ISA, QLD (YBMA)



RNP APCH  
LNAV/VNAV RQMNTS:  
● YBMA QNH RQ  
● YBMA TEMP RQ  
● PROC TEMP RANGE  
-5°C TO +58°C

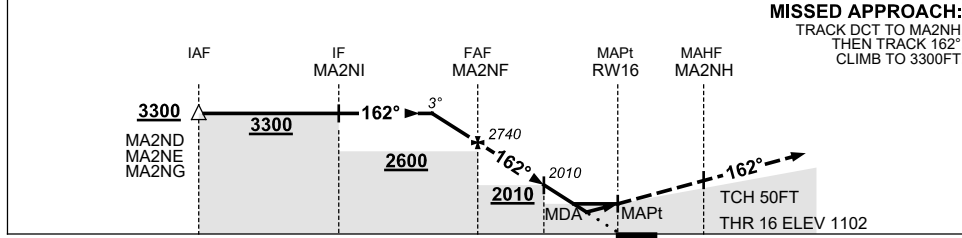


TR	IN	TURN	TIME	MIN ALT	DME LMT
162°	Left	1	3300		



**AD ELEV 1121**  
Bearings are Magnetic  
Elevations in FEET AMSL

NM TO NEXT WPT	1.7	1	MA2NF	4	3	2.7	2.5	2	1.8	RW16
ALT (3° APCH PATH)	3300	3060	2740	2430	2110	2010	1940	1790	1740	



**MISSED APPROACH:**  
TRACK DCT TO MA2NH,  
THEN TRACK 162°.  
CLIMB TO 3300FT.

NM TO RW16	15	10	5	2.7	0	3
Altitude	3300	2600	2740	2010	1740	1102

**NOTES**

CATEGORY	A	B	C	D
LNAV/VNAV		1740 (638-3.6)		
LNAV		1940 (838-4.8)		
CIRCLING *	2090 (969-2.4)	2450 (1329-4.0)	2450 (1329-5.0)	
ALTERNATE	(1469-4.4)	(1829-6.0)	(1829-7.0)	

- MAX IAS:  
INITIAL : 210KT.
- NO CIRCLING WEST  
OF RWY 16/34.
- COLOUR: SEE  
SPEC NOTICES.

Changes: Editorial.

BMAGN01-175