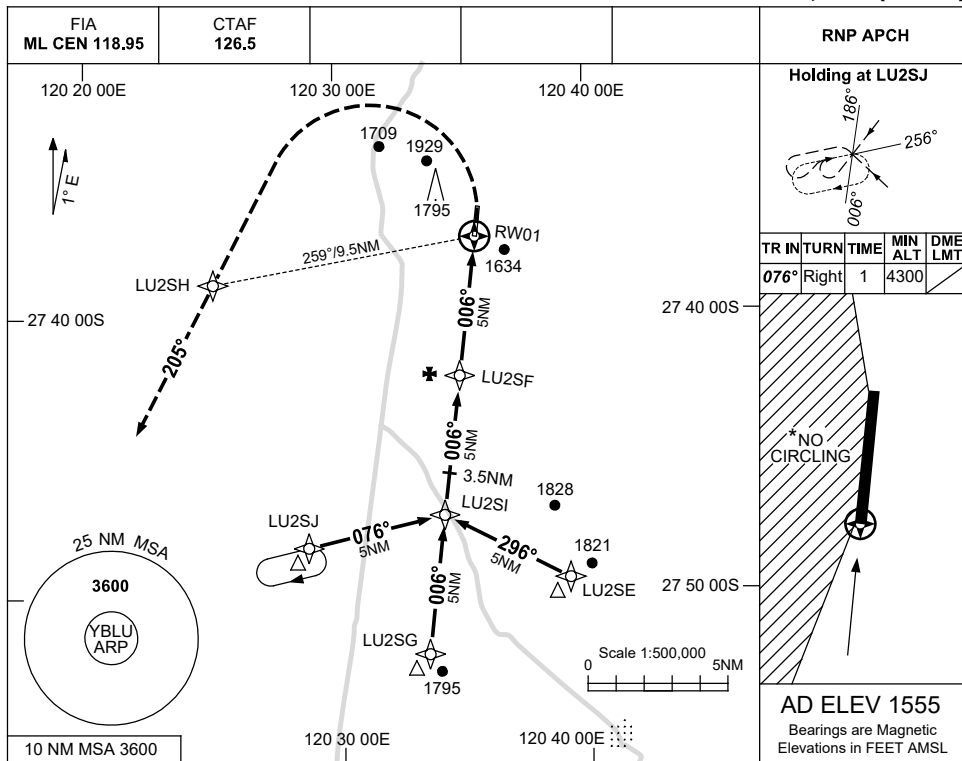


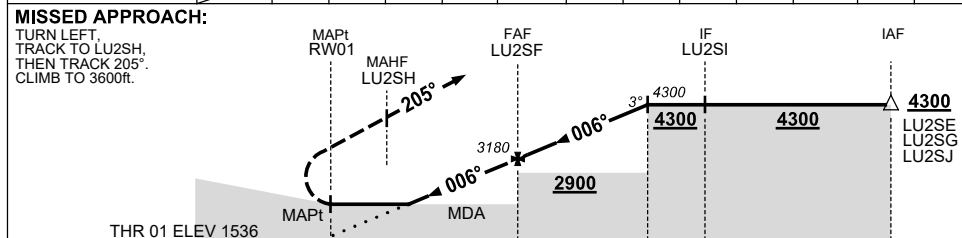
USE QNH

RNP RWY 01  
**BELLEVUE, WA (YBLU)**

28 NOV 2024



NM TO NEXT WPT	RW01	1.8	2.4	3	4	LU2SF	1	2	3	3.5		
ALT (3° APCH PATH)		2170	2360	2540	2860	3180	3500	3820	4130	4300		



NM TO RW01

**NOTES**

- MAX IAS:  
 INITIAL : 210KT.  
 MISSED APCH : 160KT.
- NO CIRCLING WEST OF RWY 01 / 19
- CAUTION: PROC OVERLAYS WITH LEINSTER AND MT KEITH PROC.

CATEGORY	A	B	C	D
LNAV (2.5% MAP)		2360 (824-4.7)		NOT APPLICABLE
LNAV (4.9% MAP)		2170 (634-3.6)		
CIRCLING	2370 (815-2.4)		2470 (915-4.0)	
ALTERNATE	(1315-4.4)		(1415-6.0)	

Changes: MSA, NO CIRCLING, LNAV MINIMA, NOTE 2, DIST-ALT, Editorial.

BLUGN02-181