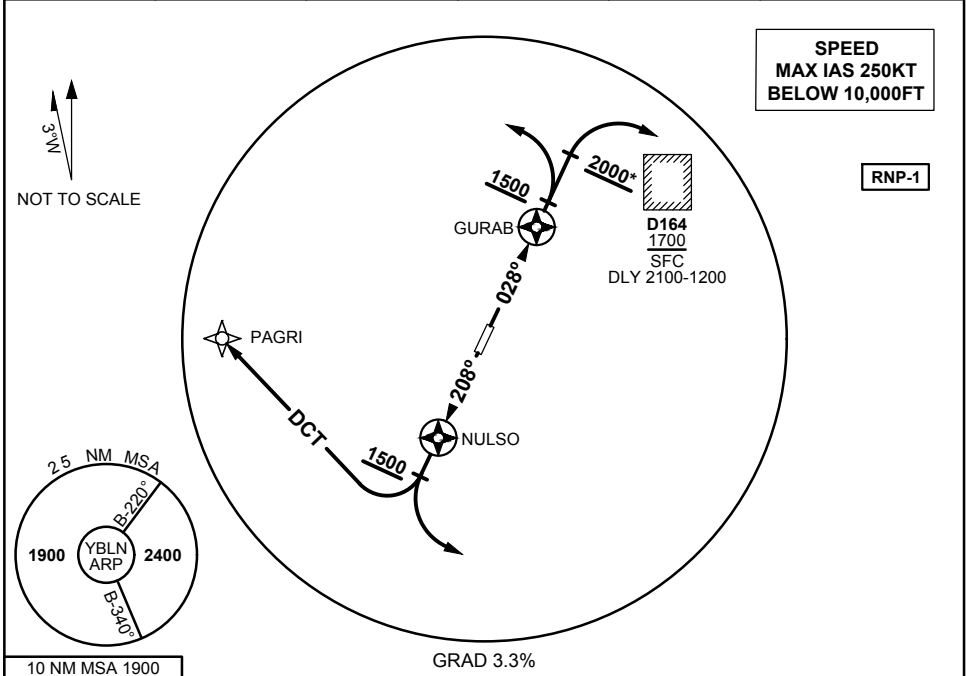


**STANDARD INSTRUMENT DEPARTURES (SID)  
BUSSELTON ONE DEPARTURE (RNAV) - RWY 03 & 21  
BUSSELTON, WA (YBLN)**

17 JUN 2021

AWIS 128.05	FIA ML CEN 124.9	CTAF + AFRU 127.0	PAL 119.6		Bearings are Magnetic Elevations in FEET AMSL
----------------	---------------------	----------------------	--------------	--	--



**BUSSELTON ONE DEPARTURE (RNAV)**

**RWY 03 NORTH, SOUTH & WEST**

- Track 028° to GURAB
- After passing GURAB **AND** NOT BLW 1500FT turn LEFT
- Intercept flight plan route

**RWY 03 EAST**

- \*GRAD 4.0% to 2000FT IF D164 ACT
- Track 028° TO GURAB
- After passing GURAB **AND** NOT BLW 2000FT\* turn RIGHT
- Intercept flight plan route

**RWY 21 NORTH & WEST**

- Track 208° to NULSO
- After passing NULSO **AND** NOT BLW 1500FT turn RIGHT DCT to PAGRI
- Intercept flight plan route

**RWY 21 SOUTH & EAST**

- Track 208° to NULSO
- After passing NULSO **AND** NOT BLW 1500FT turn LEFT
- Intercept flight plan route

Changes: DEP RWY 03 EAST

BLNDP01-167