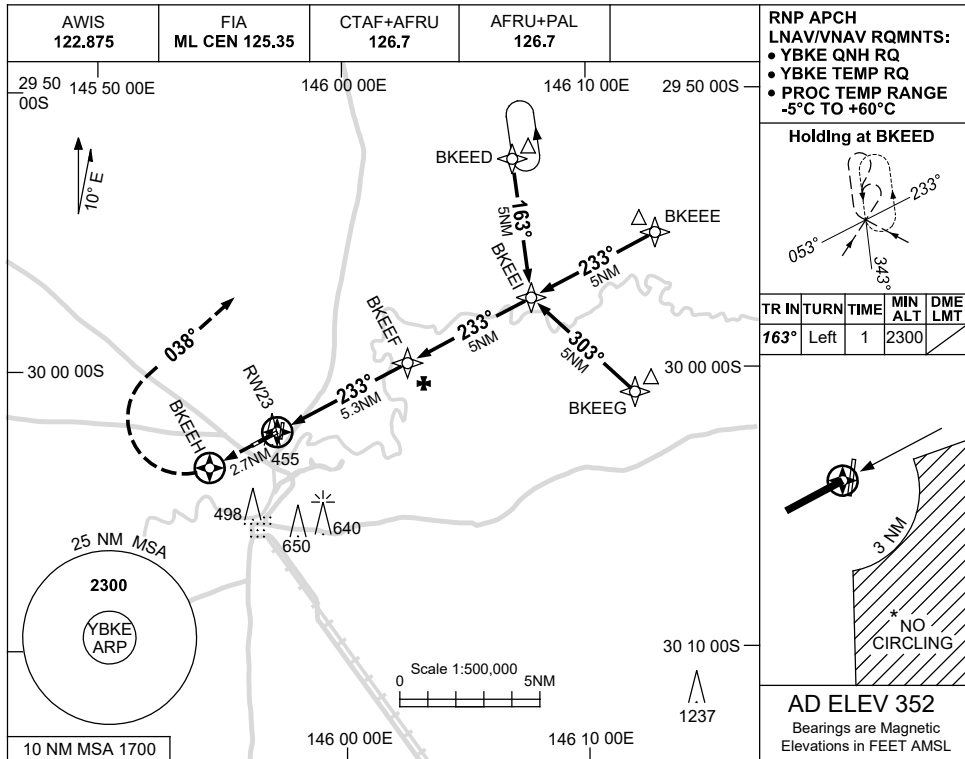


USE QNH

RNP RWY 23
BOURKE, NSW (YBKE)

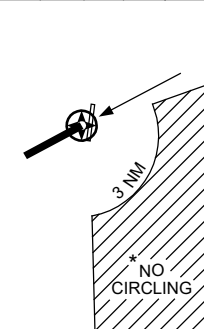
1 DEC 2022



RNP APCH
 LNAV/VNAV RQMTS:
 • YBKE QNH RQ
 • YBKE TEMP RQ
 • PROC TEMP RANGE
 -5°C TO +60°C

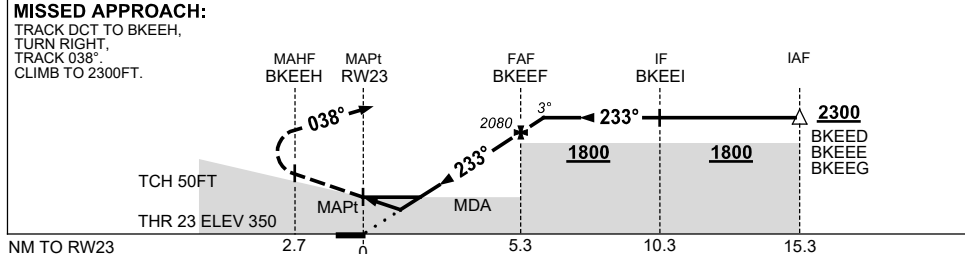
Holding at BKEED

TR IN	TURN	TIME	MIN ALT	DME LMT
163°	Left	1	2300	



AD ELEV 352
 Bearings are Magnetic
 Elevations in FEET AMSL

NM TO NEXT WPT	RW23	0.9	1.5	2	3	4	5	BKEEF	0.7
ALT (3° APCH PATH)		680	880	1040	1360	1670	1990	2090	2300



CATEGORY	A	B	C	D
LNAV/VNAV		680 (330-1.8)		NOT APPLICABLE
LNAV		880 (528-3.0)		
CIRCLING*	950 (598-2.4)		1050 (698-4.0)	
ALTERNATE	(1098-4.4)		(1198-6.0)	

1. MAX IAS:
 INITIAL : 230KT.
 * 2. NO CIRCLING
 BEYOND 3NM
 SOUTH EAST OF
 RWY 18/36.

Changes: CHART TITLE, PBN SPECIFICATION BOX.

BKEGN02-173