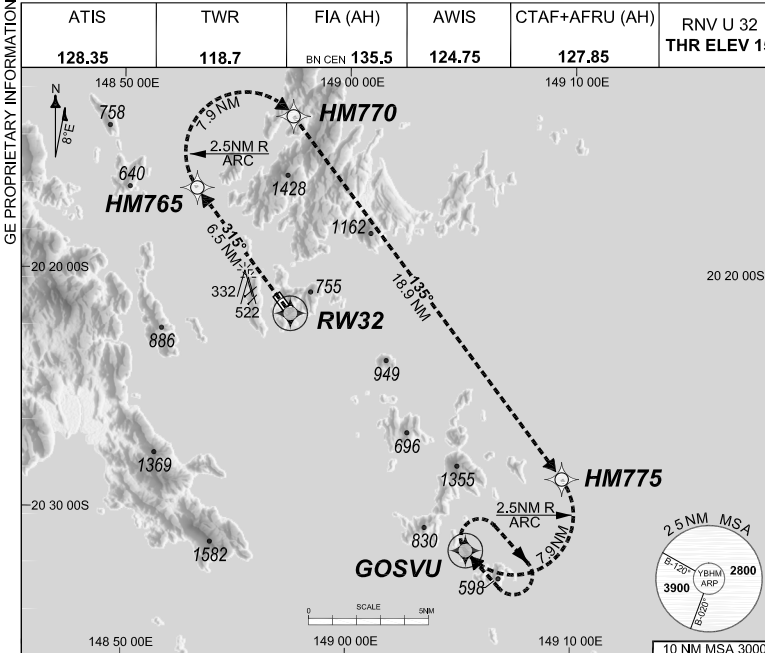


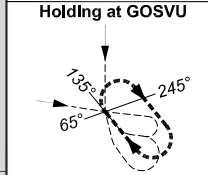
24 MAR 2022

USE QNH

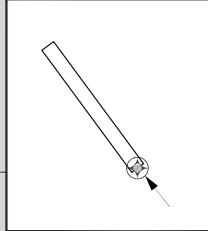
HAMILTON ISLAND, QLD (YBHM)



ATIS	TWR	FIA (AH)	AWIS	CTAF+AFRU (AH)	RNV U 32 THR ELEV 15	RNP AR APCH - RF RQ - YBHM ACT QNH RQ - YBHM ACT TEMP RQ - PROC TEMP RANGE +14°C TO +36°C
128.35	118.7	BN CEN 135.5	124.75	127.85		Holding at GOSVU



TR	INTURN	TIME	MIN	ALT	DME	LMT
315°	Right	1'	4000			



**AD ELEV 15**  
Bearings are Magnetic  
Elevations in FEET AMSL

**ENGINE OUT MISSED APPROACH:**

Track via the RNP AR Engine Out Missed Approach track to GOSVU and hold as published.

Acceleration altitude see Go-Around Safety Assessment.  
Continue to climb in hold as necessary to 4000FT, or as directed by ATC. EO hold only, not contained in CTA. Maximum holding speed **230 KIAS**.

202109231255 COPYRIGHT 2021 NAVERUS, INC. USA

Revision: From SUP H97/21, chart title

BHMG08-170

**DO NOT USE FOR NAVIGATION**

Prepared by GE Aviation

