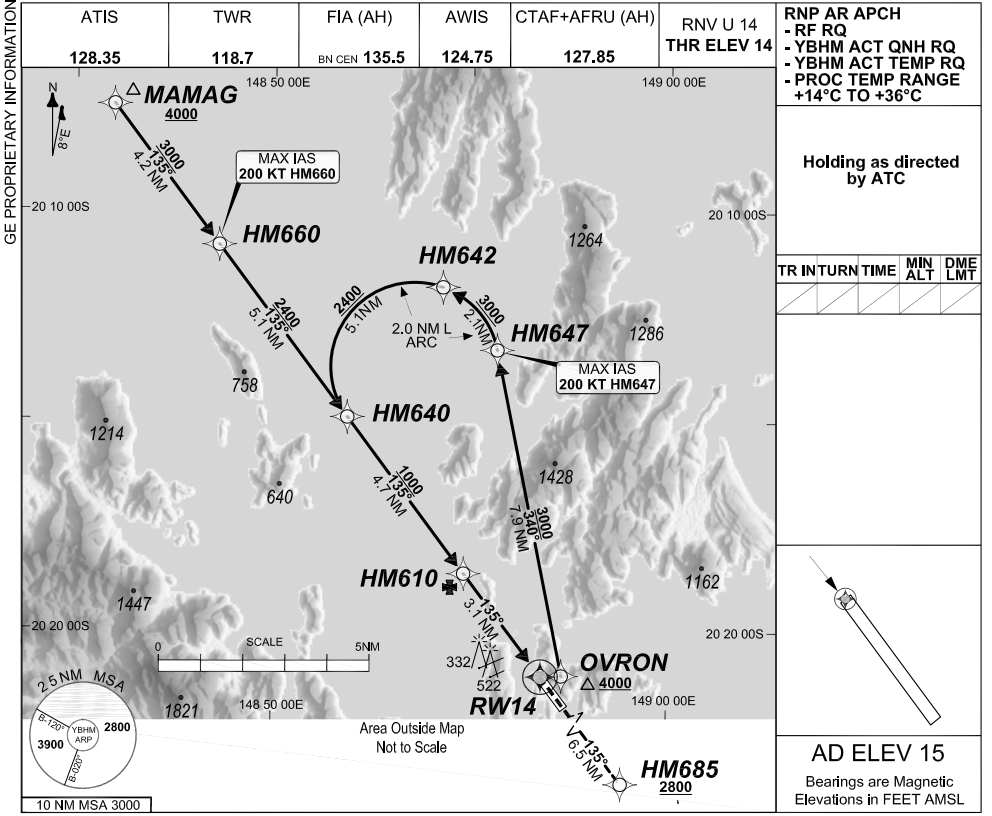


FOR CASA APPROVED OPERATORS ONLY

24 MAR 2022

USE QNH

HAMILTON ISLAND, QLD (YBHM)



			HM660	HM642	HM640	HM610	RW14	
ALT (2.90° APCH PATH)			4000	4000	2430	1000	62	

MISSED APPROACH: Climb to 2800FT or as directed by ATC via the RNP AR Missed Approach track to HM685. Acceleration altitude see Go-Around Safety Assessment.



NM FM THR		15	12.9	7.8	3.1	6.5
-----------	--	----	------	-----	-----	-----

CATEGORY	A	B	C	D
RNP (0.30)	NOT APPLICABLE		DA(H) 653' (639')-3.6	
RNP ()	NOT APPLICABLE		DA(H) ()-. .	
RNP ()	NOT APPLICABLE		DA(H) ()-. .	
RNP ()	NOT APPLICABLE		DA(H) ()-. .	
CIRCLING			NOT AUTHORISED	

- NOTES**
1. PROC AVBL up to MLW.
 2. Lateral transition to MAP must not be initiated prior to DA/H PSN.
 3. APCH Path does not coincide with PAPI glide path 3°.
 4. Transient yacht masts may infringe RWY 14 visual approach slope clearance.
 5. See Engineering Report for Minimum MAP gradient (AE) to 2800 FT.

20210930/1556 COPYRIGHT 2021 NAVERUS, INC. USA

Revision: From SUP H97/21, chart title

BHMGN05-170

DO NOT USE FOR NAVIGATION

Prepared by GE Aviation

© Airservices Australia

