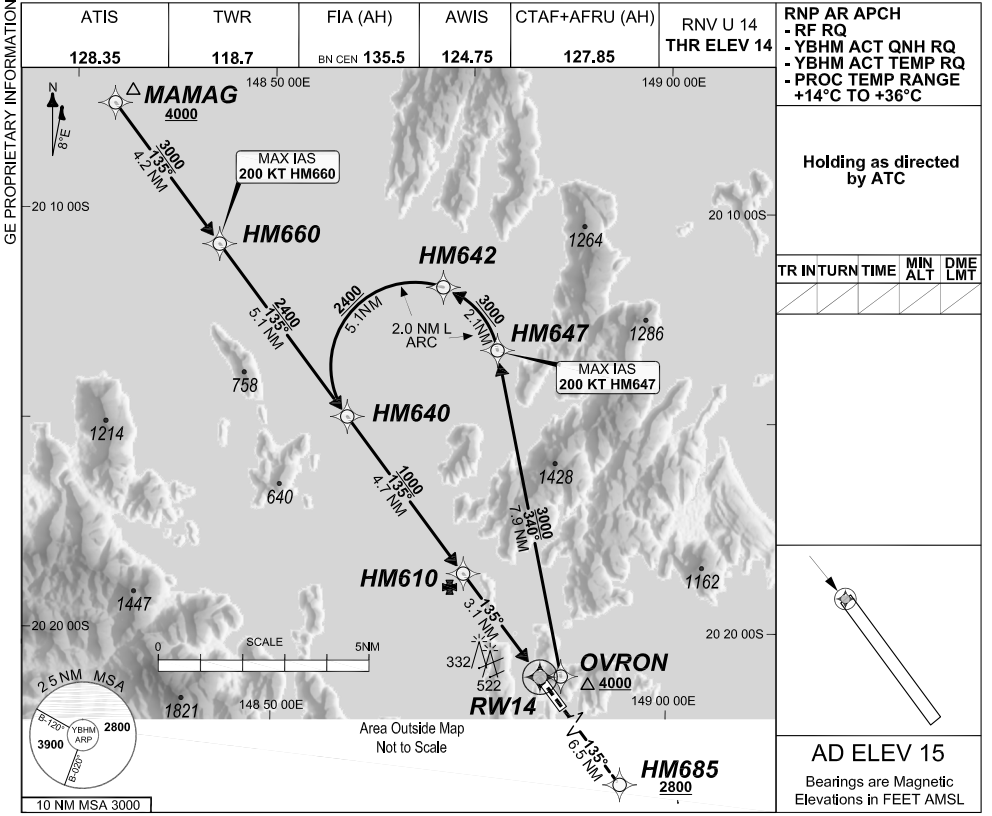


FOR CASA APPROVED OPERATORS ONLY

24 MAR 2022

USE QNH

HAMILTON ISLAND, QLD (YBHM)



ALT (2.90° APCH PATH)		HM660	HM642	HM640	HM610	RW14
		4000	4000	2430	1000	62

MISSED APPROACH: Climb to 2800FT or as directed by ATC via the RNP AR Missed Approach track to HM685. Acceleration altitude see Go-Around Safety Assessment.



NM FM THR	15	12.9	7.8	3.1	6.5
-----------	----	------	-----	-----	-----

CATEGORY	NOTES			
	A	B	C	D
RNP (0.30)	NOT APPLICABLE		DA(H) 653' (639')-3.6	
RNP ()	NOT APPLICABLE		DA(H) () - .	
RNP ()	NOT APPLICABLE		DA(H) () - .	
RNP ()	NOT APPLICABLE		DA(H) () - .	
CIRCLING			NOT AUTHORISED	

- PROC AVBL up to MLW.
- Lateral transition to MAP must not be initiated prior to DA/H PSN.
- APCH Path does not coincide with PAPI glide path 3°.
- Transient yacht masts may infringe RWY 14 visual approach slope clearance.
- See Engineering Report for Minimum MAP gradient (AE) to 2800 FT.

20210930/1556 COPYRIGHT 2021 NAVERUS, INC. USA

Revision: From SUP H97/21, chart title

BHMGN05-170

DO NOT USE FOR NAVIGATION

Prepared by GE Aviation

© Airservices Australia

