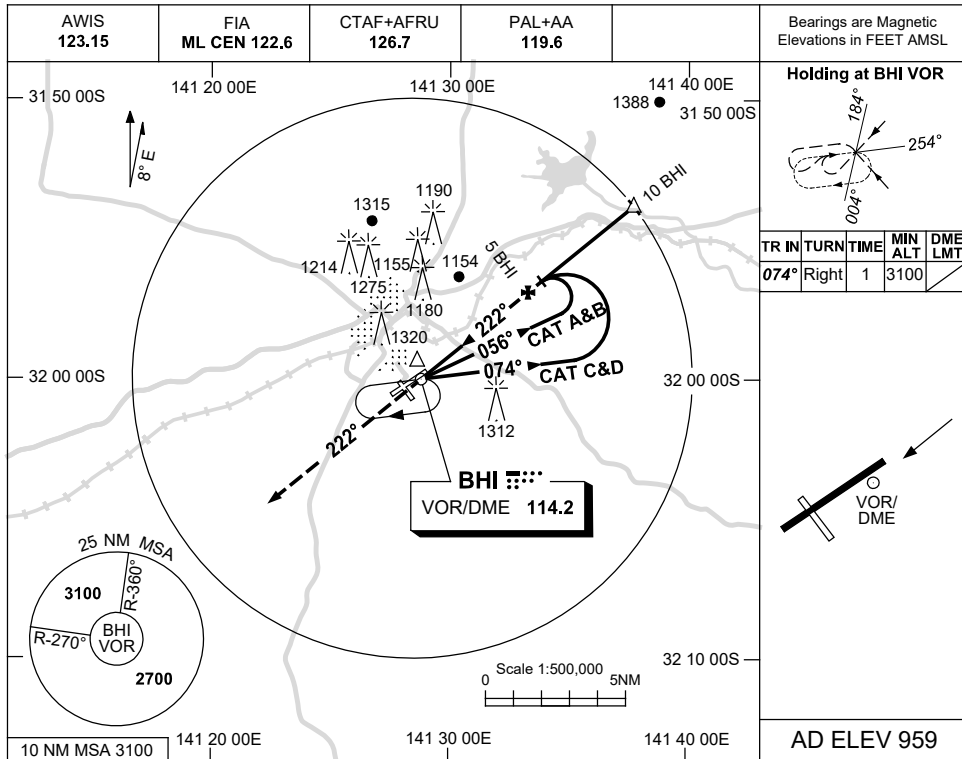


USE QNH

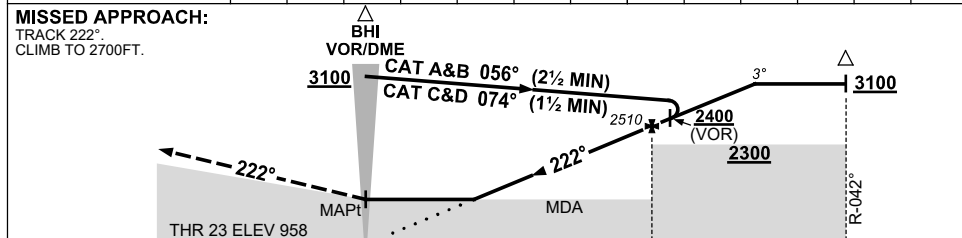
VOR RWY 23

BROKEN HILL, NSW (YBHI)

16 JUN 2022



DIST TO BHI DME	1.9	2	3	4	5	6	6.8				
ALT (3° APCH PATH)	1530	1550	1870	2190	2510	2830	3100				



NM TO BHI DME	0	5	10
---------------	---	---	----

NOTES

CATEGORY	A	B	C	D
S-I VOR		1710 (751-4.3)		
S-I VOR/DME		1530 (571-3.2)		
CIRCLING	1720 (761-2.4)		1880 (921-4.0)	1880 (921-5.0)
ALTERNATE	(1261-4.4)		(1421-6.0)	(1421-7.0)

1. MAX IAS:
BASE TURN: 210KT
2. SCALLOPING MAY OCCUR ON FINAL.

Changes: PAL+AA.

BHIVO02-171