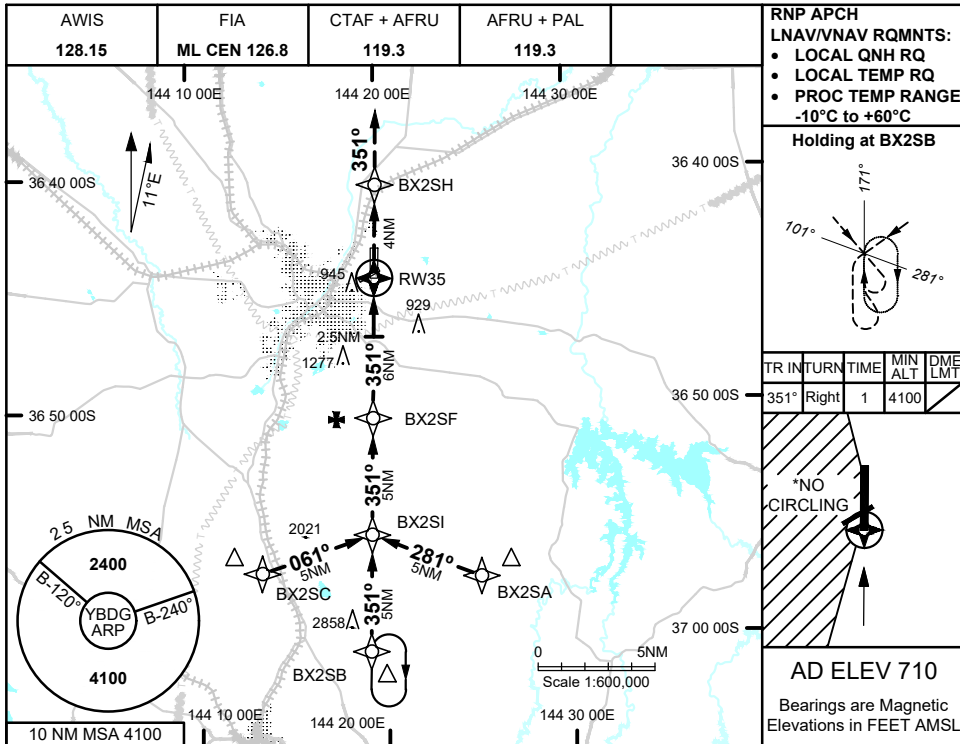
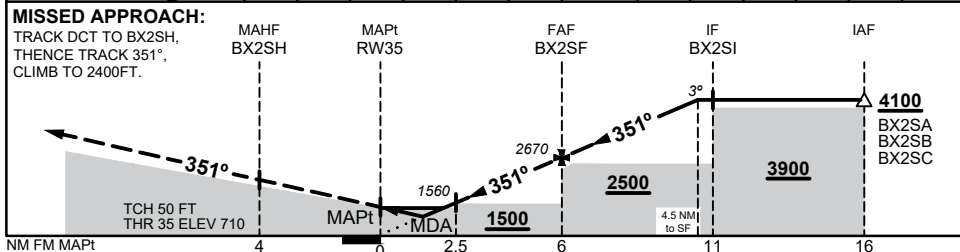


23 MAR 2023



NM TO NEXT WPT	RW35	1.3	2	2.5	3	4	5	BX2SF	1	2	3	4	4.5
ALT (3° APCH PATH)		1170	1410	1560	1720	2030	2350	2670	2990	3310	3630	3940	4100



NOTES

1. MAX IAS:
INITIAL : 210KTS
- *2. NO CIRCLING WEST OF RWY 17/35

CATEGORY	A	B	C	D
LNAV/VNAV	1170 (460 - 2.6)			NOT APPLICABLE
LNAV	1420 (710 - 4.0)			
CIRCLING*	1460 (750 - 2.4)		1790 (1080 - 4.0)	
ALTERNATE	(1250 - 4.4)		(1580 - 6.0)	

Changes: CHART TITLE

BDGGN02-174