

**STANDARD INSTRUMENT ARRIVAL (STAR)
TOTTU FIVE WHISKEY ARRIVAL (RNAV)
CAIRNS/CAIRNS INTL, QLD (YBCS)**

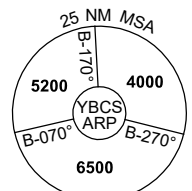
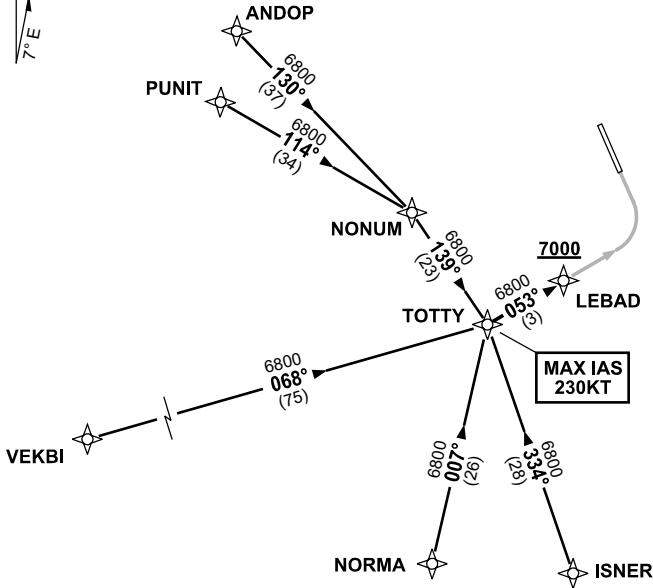
30 NOV 2023

ATIS 113.0 131.1	APP 118.4 126.1	TWR 124.9	SMC 121.7		Bearings are Magnetic Elevations in FEET AMSL
---------------------	--------------------	--------------	--------------	--	--------------------------------------------------

NOT TO SCALE



**SPEED
MAX IAS 250KT
BELOW 10,000ft**



10 NM MSA 5600

TRANSITIONS:

- ANDOP:** From ANDOP to TOTTU
- Track 130° to NONUM,
 - Turn RIGHT, track 139° to TOTTU
- PUNIT:** From PUNIT to TOTTU
- Track 114° to NONUM,
 - Turn RIGHT, track 139° to TOTTU

- VEKBI:** From VEKBI to TOTTU
- Track 068° to TOTTU
- NORMA:** From NORMA to TOTTU
- Track 007° to TOTTU
- ISNER:** From ISNER to TOTTU
- Track 334° to TOTTU

FOLLOW ARRIVAL INSTRUCTIONS

- ARRIVAL:** TOTTU FIVE
- RWY 33 WHISKEY:** From TOTTU track 053° to LEBAD, thence via RNP W RWY 33 (AR)
MAX IAS 230KT from TOTTU

**COMMUNICATIONS FAILURE: PROCEDURE IN IMC
IF ABLE CTC CS ATC ON TEL: (07) 3866 3533**

- Squawk 7600, comply with vertical navigation requirements, but not below MSA.
- Track via the latest STAR clearance to the nominated runway, then fly the most suitable approach in accordance with ERS A EMERG Section 1.5.

Changes: WAYPOINT NAMES, VALIDITY NUMBER, Editorial.

