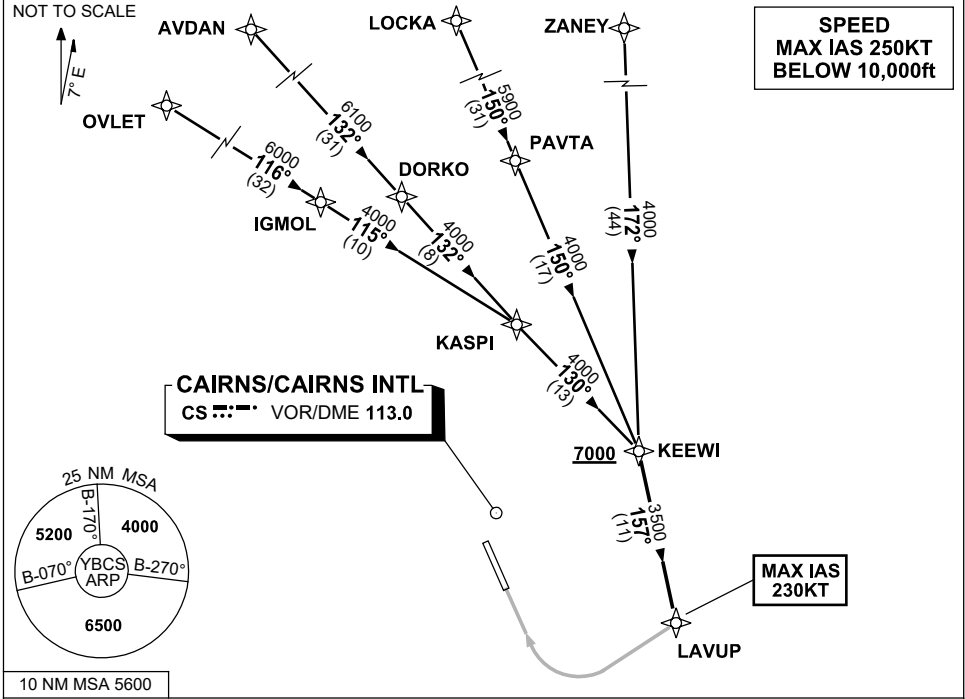


**STANDARD INSTRUMENT ARRIVAL (STAR)  
KEEWI THREE X-RAY ARRIVAL (RNAV)  
CAIRNS/CAIRNS INTL, QLD (YBCS)**

**30 NOV 2023**

ATIS 113.0 131.1	APP 118.4 126.1	TWR 124.9	SMC 121.7		Bearings are Magnetic Elevations in FEET AMSL
---------------------	--------------------	--------------	--------------	--	--



**TRANSITIONS:**

- ZANEY:**
  - From ZANEY track 172° to KEEWI
- LOCKA:**
  - From LOCKA track 150° to PAVTA
  - Track 150° to KEEWI
- AVDAN:**
  - From AVDAN track 132° to DORKO
  - Track 132° to KASPI
  - Track 130° to KEEWI
- OVLET:**
  - From OVLET track 116° to IGMOL
  - Track 115° to KASPI
  - Track 130° to KEEWI

**FOLLOW ARRIVAL INSTRUCTIONS**

- ARRIVAL: KEEWI THREE**
- RWY 33 X-RAY:** **Cross** KEEWI AT or ABV 7000ft
- From KEEWI track 157° to LAVUP, thence via RNP X RWY 33 (AR)  
MAX IAS 230KT from LAVUP

**COMMUNICATIONS FAILURE: PROCEDURE IN IMC  
IF ABLE CTC CS ATC ON TEL: (07) 3866 3533**

- Squawk 7600, comply with vertical navigation requirements, but not below MSA.
- Track via the latest STAR clearance to the nominated runway, then fly the most suitable approach in accordance with ERSA EMERG Section 1.5.

Changes: WAYPOINT NAMES, VALIDITY NUMBER, Editorial.

BCSSR12-177