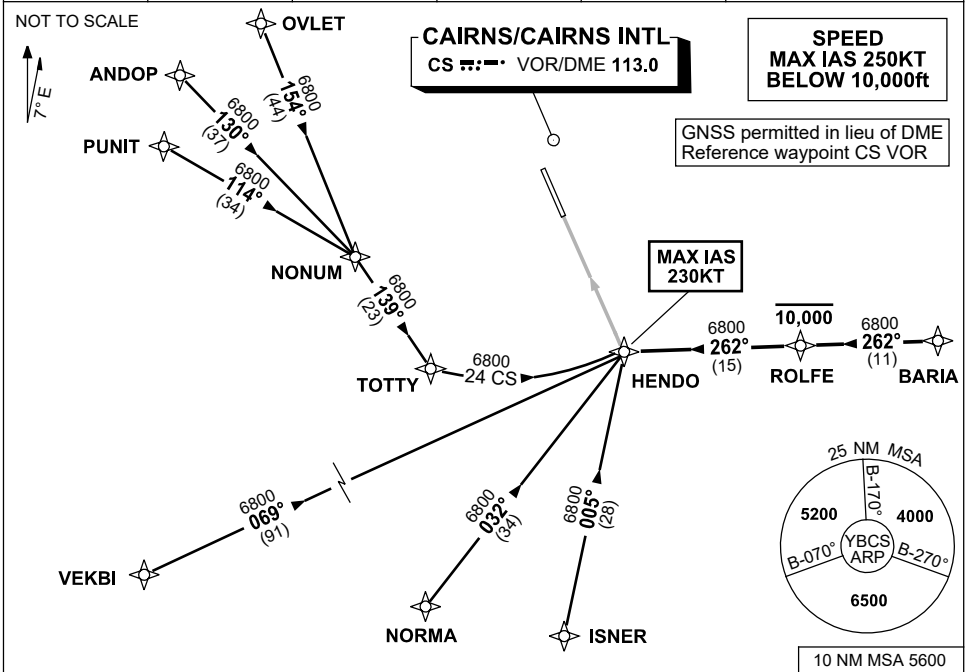


**STANDARD INSTRUMENT ARRIVAL (STAR)  
HENDO NINE YANKEE ARRIVAL (RNAV)  
CAIRNS/CAIRNS INTL, QLD (YBCS)**

**30 NOV 2023**

ATIS 113.0 131.1	APP 118.4 126.1	TWR 124.9	SMC 121.7	Bearings are Magnetic Elevations in FEET AMSL
---------------------	--------------------	--------------	--------------	--------------------------------------------------



**TRANSITIONS:**

- OVLET:** From OVLET to HENDO
- Track 154° to NONUM,
  - Turn LEFT, track 139° to TOTTY,
  - Thence 24 CS arc to HENDO.
- ANDOP:** From ANDOP to HENDO
- Track 130° to NONUM,
  - Turn RIGHT, track 139° to TOTTY,
  - Thence 24 CS arc to HENDO.
- PUNIT:** From PUNIT to HENDO
- Track 114° to NONUM,
  - Turn RIGHT, track 139° to TOTTY,
  - Thence 24 CS arc to HENDO.

- VEKBI:** From VEKBI to HENDO
- Track 069° to HENDO.
- NORMA:** From NORMA to HENDO
- Track 032° to HENDO.
- ISNER:** From ISNER to HENDO
- Track 005° to HENDO.
- BARIA:** From BARIA to HENDO
- Track 262° to ROLFE.
  - Cross** ROLFE AT or BLW 10,000ft.
  - Track 262° to HENDO.

**FOLLOW ARRIVAL INSTRUCTIONS**

**ARRIVAL:** HENDO NINE

**RWY 33 YANKEE:** From HENDO track via RNP Y RWY 33 (AR)  
MAX IAS 230KT from HENDO

**COMMUNICATIONS FAILURE: PROCEDURE IN IMC  
IF ABLE CTC CS ATC ON TEL: (07) 3866 3533**

- Squawk 7600, comply with vertical navigation requirements, but not below MSA.
- Track via the latest STAR clearance to the nominated runway, then fly the most suitable approach in accordance with ERSA EMERG Section 1.5.