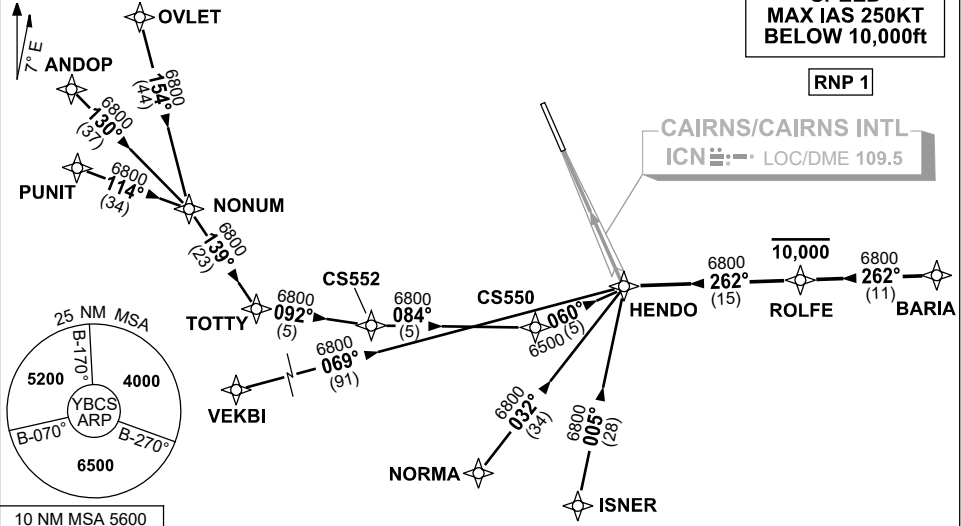


**STANDARD INSTRUMENT ARRIVAL (STAR)
HENDO ONE ALPHA ARRIVAL (RNAV)
CAIRNS/CAIRNS INTL, QLD (YBCS)**

20 MAR 2025

ATIS 113.0 131.1	APP 118.4 126.1	TWR 124.9	SMC 121.7		Bearings are Magnetic Elevations in FEET AMSL
---------------------	--------------------	--------------	--------------	--	--

NOT TO SCALE



TRANSITIONS:

- OVLET:** From OVLET to HENDO
- Track 154° to NONUM
 - Turn LEFT, track 139° to TOTTY
 - Turn LEFT, track 092° to CS552
 - Turn LEFT, track 084° to CS550
 - Turn LEFT, track 060° to HENDO
- ANDOP:** From ANDOP to HENDO
- Track 130° to NONUM
 - Turn RIGHT, track 139° to TOTTY
 - Turn LEFT, track 092° to CS552
 - Turn LEFT, track 084° to CS550
 - Turn LEFT, track 060° to HENDO
- PUNIT:** From PUNIT to HENDO
- Track 114° to NONUM
 - Turn RIGHT, track 139° to TOTTY
 - Turn LEFT, track 092° to CS552
 - Turn LEFT, track 084° to CS550
 - Turn LEFT, track 060° to HENDO

- VEKBI:** From VEKBI to HENDO
- Track 069° to HENDO
- NORMA:** From NORMA to HENDO
- Track 032° to HENDO
- ISNER:** From ISNER to HENDO
- Track 005° to HENDO
- BARIA:** From BARIA to HENDO
- Track 262° to ROLFE
 - **Cross** ROLFE AT or BLW 10,000ft
 - Track 262° to HENDO

FOLLOW ARRIVAL INSTRUCTIONS

ARRIVAL: HENDO ONE
RWY 33 ALPHA: From HENDO track via LOC RWY 33 or RNP Y RWY 33 (AR) approach

**COMMUNICATIONS FAILURE: PROCEDURE IN IMC
IF ABLE CTC CS ATC ON TEL: (07) 3866 3533**

- Squawk 7600, comply with vertical navigation requirements, but not below MSA.
- Track via the latest STAR clearance to the nominated runway, then fly the most suitable approach in accordance with ERSA EMERG Section 1.5.