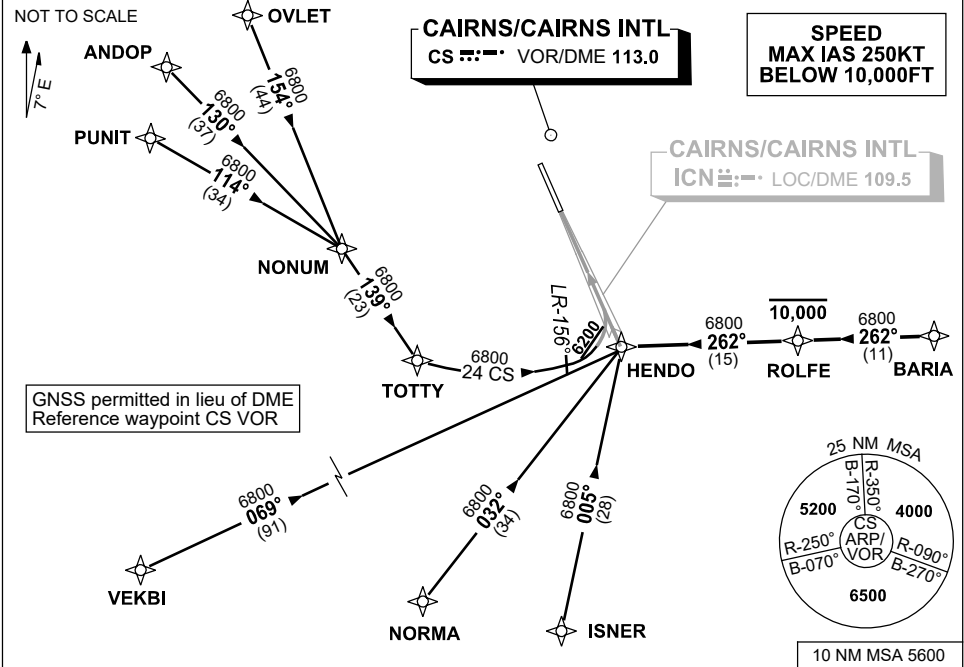


**STANDARD INSTRUMENT ARRIVAL (STAR)
HENDO NINE ALPHA ARRIVAL (RNAV)
CAIRNS/CAIRNS INTL, QLD (YBCS)**

30 NOV 2023

ATIS 113.0 131.1	APP 118.4 126.1	TWR 124.9	SMC 121.7	Bearings are Magnetic Elevations in FEET AMSL
---------------------	--------------------	--------------	--------------	--



TRANSITIONS:

- | | |
|---|---|
| <p><u>OVLET:</u> From OVLET to HENDO</p> <ul style="list-style-type: none"> Track 154° to NONUM, Turn LEFT, track 139° to TOTTY, Thence 24 CS arc to HENDO. <p><u>ANDOP:</u> From ANDOP to HENDO</p> <ul style="list-style-type: none"> Track 130° to NONUM, Turn RIGHT, track 139° to TOTTY, Thence 24 CS arc to HENDO. <p><u>PUNIT:</u> From PUNIT to HENDO</p> <ul style="list-style-type: none"> Track 114° to NONUM, Turn RIGHT, track 139° to TOTTY, Thence 24 CS arc to HENDO. | <p><u>VEKBI:</u> From VEKBI to HENDO</p> <ul style="list-style-type: none"> Track 069° to HENDO. <p><u>NORMA:</u> From NORMA to HENDO</p> <ul style="list-style-type: none"> Track 032° to HENDO. <p><u>ISNER:</u> From ISNER to HENDO</p> <ul style="list-style-type: none"> Track 005° to HENDO. <p><u>BARIA:</u> From BARIA to HENDO</p> <ul style="list-style-type: none"> Track 262° to ROLFE. Cross ROLFE AT or BLW 10,000ft. Track 262° to HENDO. |
|---|---|

FOLLOW ARRIVAL INSTRUCTIONS

- ARRIVAL:** HENDO NINE
- RWY 33 ALPHA:** From HENDO intercept LOC RWY 33.

**COMMUNICATIONS FAILURE: PROCEDURE IN IMC
IF ABLE CTC CS ATC ON TEL: (07) 3866 3533**

- Squawk 7600, comply with vertical navigation requirements, but not below MSA.
- Track via the latest STAR clearance to the nominated runway, then fly the most suitable approach in accordance with ERSA EMERG Section 1.5.

Changes: WAYPOINT NAMES, VALIDITY NUMBER, Editorial.

BCSSR05-177