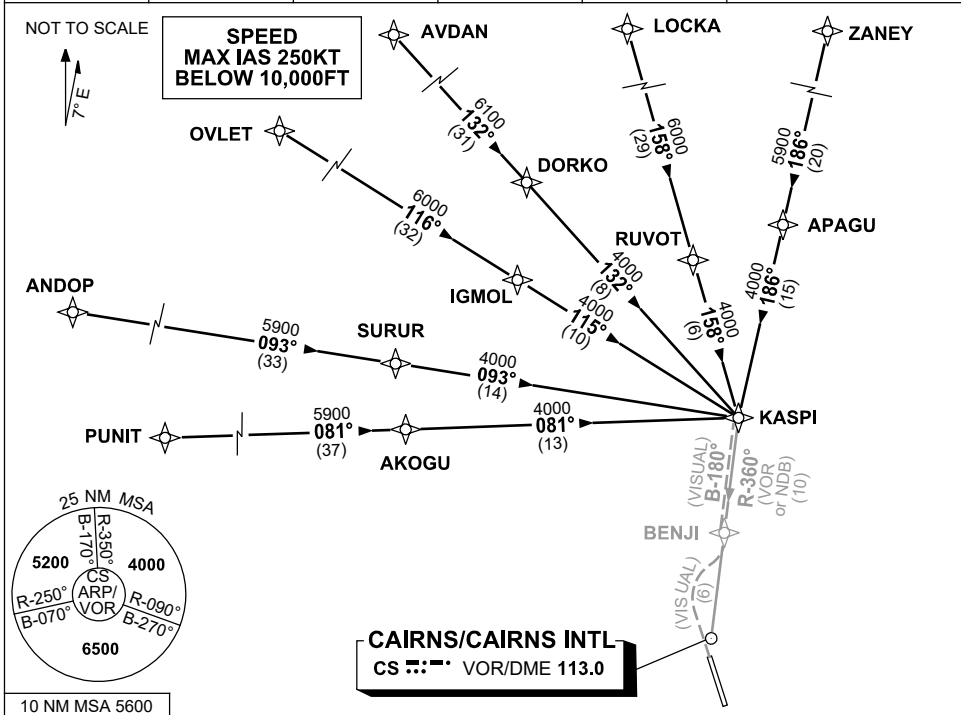


**STANDARD INSTRUMENT ARRIVAL (STAR)  
KASPI ONE BRAVO, VICTOR ARRIVALS (RNAV)  
CAIRNS/CAIRNS INTL, QLD (YBCS)**

**30 NOV 2023**

ATIS 113.0 131.1	APP 118.4 126.1	TWR 124.9	SMC 121.7		Bearings are Magnetic Elevations in FEET AMSL
---------------------	--------------------	--------------	--------------	--	--



**TRANSITIONS:**

- PUNIT:** • From PUNIT track 081° to AKOGU, thence track 081° to KASPI
- ANDOP:** • From ANDOP track 093° to SURUR, thence track 093° to KASPI
- OVLET:** • From OVLET track 116° to IGMOL, thence track 115° to KASPI
- AVDAN:** • From AVDAN track 132° to DORKO, thence track 132° to KASPI
- LOCKA:** • From LOCKA track 158° to RUVOT, thence track 158° to KASPI
- ZANEY:** • From ZANEY track 186° to APAGU, thence track 186° to KASPI

**FOLLOW ARRIVAL INSTRUCTIONS**

**ARRIVAL: KASPI ONE**

- RWY 15 BRAVO:** From KASPI track via NDB-A or VOR-A.
- RWY 15 VICTOR:** From KASPI track 180° VISUAL to BENJI thence VISUAL track via 'Creek Corridor' (Cairns NAP refers)

**COMMUNICATIONS FAILURE: PROCEDURE IN IMC  
IF ABLE CTC CS ATC ON TEL: (07) 3866 3533**

- Squawk 7600, comply with vertical navigation requirements, but not below MSA.
- Track via the latest STAR clearance to the nominated runway, then fly the most suitable approach in accordance with ERSA EMERG Section 1.5.

Changes: WAYPOINT NAMES, CHART TITLE, Editorial.

BCSSR04-177