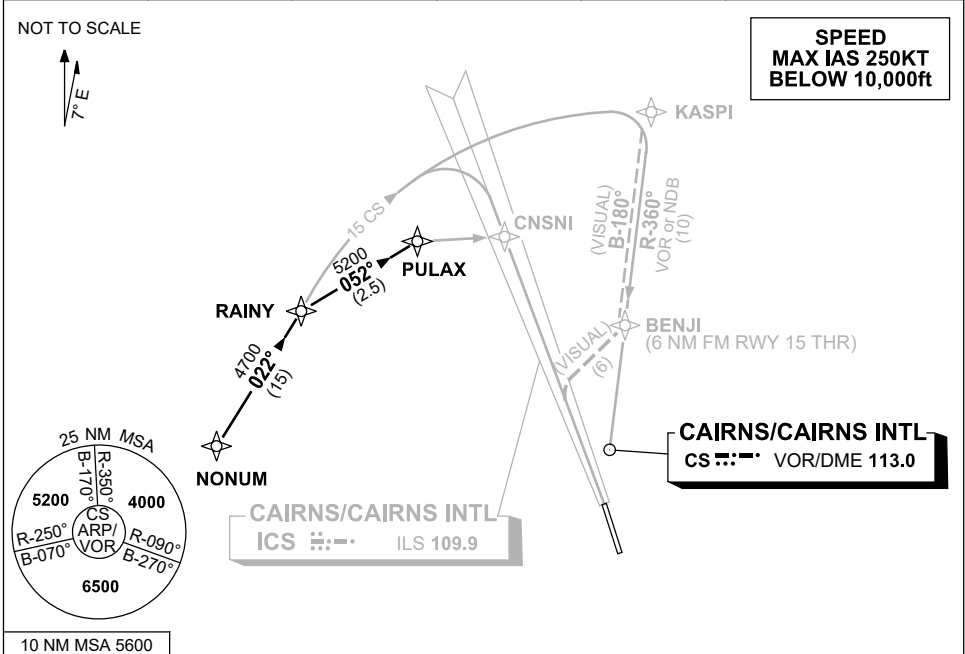


**STANDARD INSTRUMENT ARRIVAL (STAR)  
NONUM FOUR ALPHA, BRAVO, VICTOR, ZULU ARRIVALS (RNAV)  
CAIRNS/CAIRNS INTL, QLD (YBCS)**

**30 NOV 2023**

ATIS 113.0 131.1	APP 118.4 126.1	TWR 124.9	SMC 121.7		Bearings are Magnetic Elevations in FEET AMSL
---------------------	--------------------	--------------	--------------	--	--



**ARRIVAL: NONUM FOUR ALPHA**

**RWY 15:** From NONUM track 022° to RAINY  
From RAINY track via CS 15 DME arc for ILS or LOC RWY 15

**ARRIVAL: NONUM FOUR BRAVO**

**RWY 15:** From NONUM track 022° to RAINY, thence via CS 15 DME arc to KASPI  
for NDB-A or VOR-A

**ARRIVAL: NONUM FOUR VICTOR**

**RWY 15:** From NONUM track 022° to RAINY, thence via CS 15 DME arc VISUAL to KASPI.  
From KASPI track 180° VISUAL to BENJI thence VISUAL track via  
"Creek Corridor" (Cairns NAP refers)

**ARRIVAL: NONUM FOUR ZULU**

**RWY 15:** From NONUM track 022° to RAINY  
Turn RIGHT, track 052° to PULAX for RNP Y RWY 15 (LNAV/VNAV ONLY) or  
RNP Z RWY 15

**COMMUNICATIONS FAILURE: PROCEDURE IN IMC  
IF ABLE CTC CS ATC ON TEL: (07) 3866 3533**

- Squawk 7600, comply with vertical navigation requirements, but not below MSA.
- Track via the latest STAR clearance to the nominated runway, then fly the most suitable approach in accordance with ERSA EMERG Section 1.5.