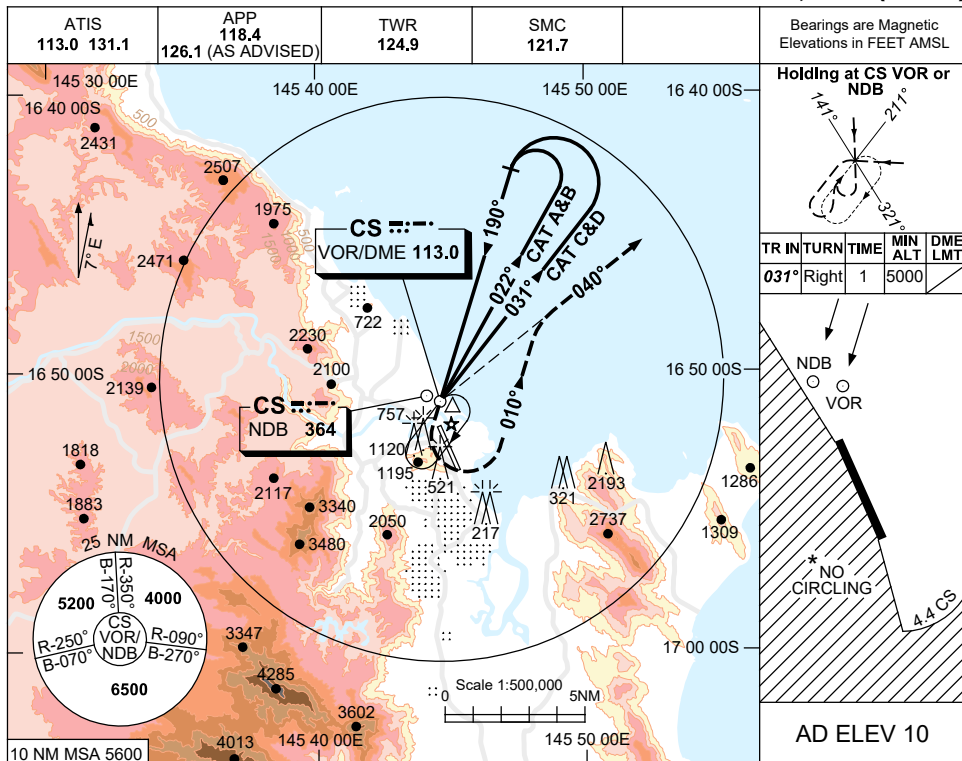


USE QNH

NDB-B or VOR-B

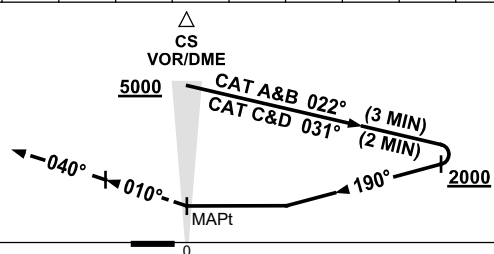
2 DEC 2021

CAIRNS/CAIRNS INTL, QLD (YBCS)



| | | | | |
|----------|----------------|--|--|--|
| DME DIST | NOT APPLICABLE | | | |
| ALT | | | | |

MISSED APPROACH:
 AT NDB or VOR TURN LEFT
 TRACK 010°, INTERCEPT
 040° CS VOR or NDB.
 CLIMB TO 4000FT OR AS
 DIRECTED BY ATC.



NM TO CS DME

NOTES

1. MAX IAS:
 HOLDING: 185KT.
 INITIAL: CAT A&B 140KT.
 MAP TURN: 185KT.
- *2. NO CIRCLING WEST OF RWY 15/33 OR BEYOND 4.4 DME OR 2NM SOUTH OF THR RWY 33.
- ‡3. WITHOUT ILS, LOC & DME.
4. **COLOUR:** SEE SPEC NOTICES.

| CATEGORY | A | B | C | D |
|-------------|------------------------|------------------------|------------------------|---|
| CIRCLING * | 1620 (1610-2.4) | 1620 (1610-4.0) | 1620 (1610-5.0) | |
| ALTERNATE ‡ | (2110-4.4) | (2110-6.0) | (2110-7.0) | |

Changes: APP FREQ.

BCSNB02-199