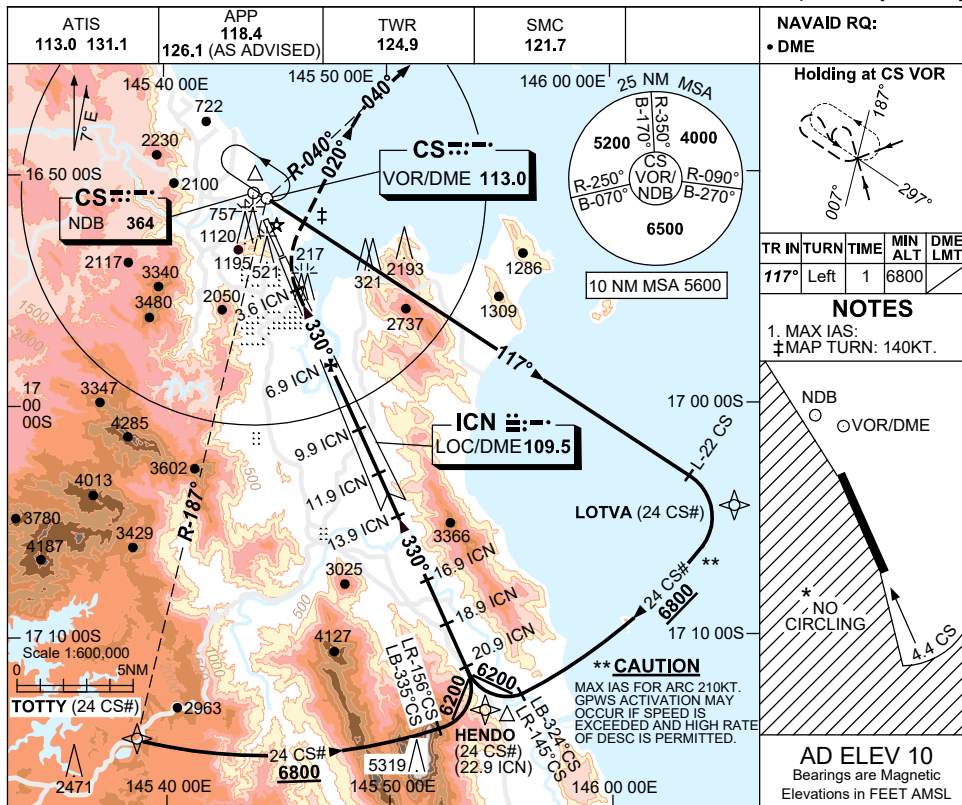


USE QNH

LOC-Y RWY 33

30 NOV 2023

CAIRNS/CAIRNS INTL, QLD (YBCS)

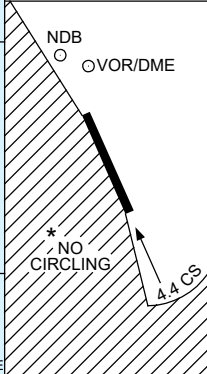


NAVAID RQ:  
• DME

Holding at CS VOR

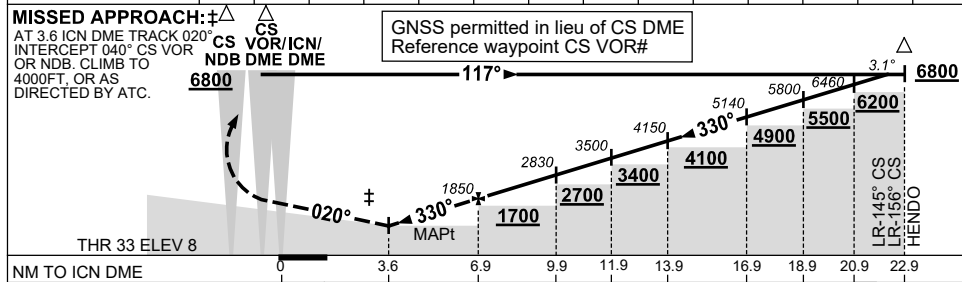
TR IN	TURN	TIME	MIN ALT	DME LMT
117°	Left	1	6800	

**NOTES**  
1. MAX IAS:  
‡MAP TURN: 140KT.



**AD ELEV 10**  
Bearings are Magnetic  
Elevations in FEET AMSL

DIST TO ICN DME	3.6	5	6	6.9	8	9	9.9	11.9	13.9	16.9	18.9	20.9	22	
ALT (3.1° APCH PATH)	730	1210	1530	1850	2190	2520	2830	3500	4150	5140	5800	6460	6800	



NM TO ICN DME	0	3.6	6.9	9.9	11.9	13.9	16.9	18.9	20.9	22.9
NM TO RWY 33 THR	0	2	5.4	10.4						

CATEGORY	A	B	C	D
S-I LOC	730 (720-4.1)		NOT APPLICABLE	
CIRCLING*	730 (720-2.4)			
ALTERNATE	(1220-4.4)			

**NOTES**

\*2. NO CIRCLING WEST OF RWY 15/33 OR BEYOND 4.4 DME TO THE SOUTH.

3. COLOUR: SEE SPEC NOTICES.

4. USE OF LOC RESTR: W OF RWY CL-WI 30°.

Changes: LOTVA REPLACES BASIL, Editorial.

BCSLZ04-177