

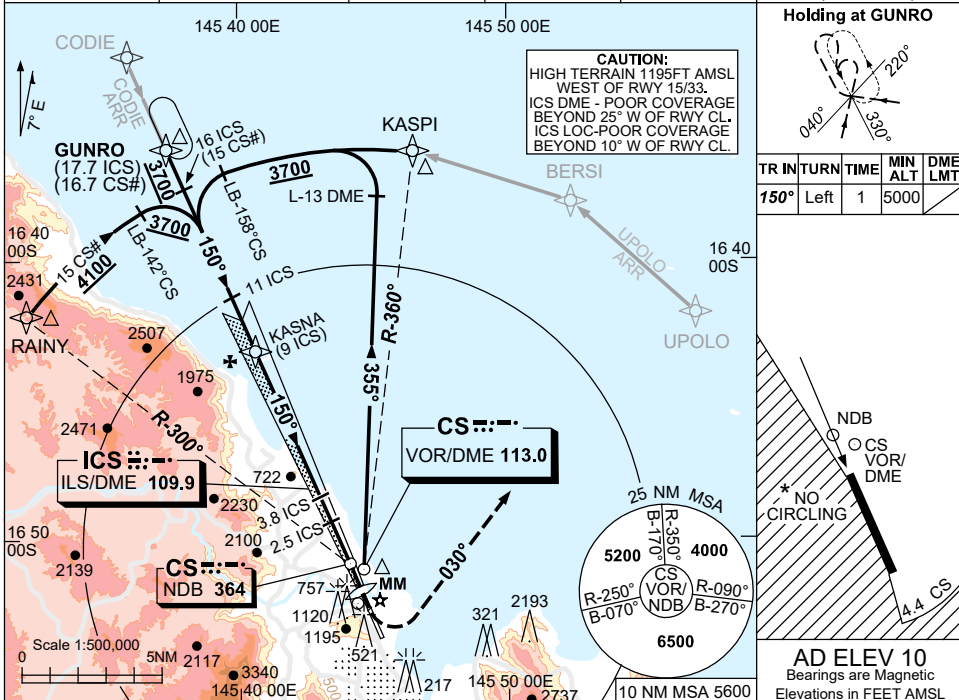
USE QNH

ILS-Y or LOC-Y RWY 15

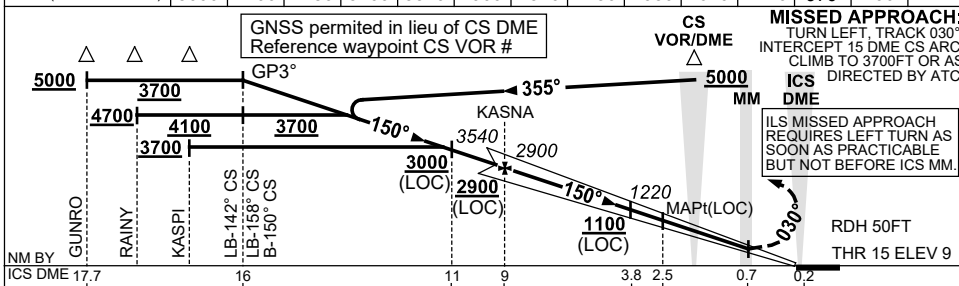
30 NOV 2023

CAIRNS/CAIRNS INTL, QLD (YBCS)

ATIS 113.0 131.1	APP 118.4 (AS ADVISED)	TWR 124.9	SMC 121.7	NAVAID RQ: • DME or GNSS (ILS) • DME (LOC ONLY)
---------------------	------------------------------	--------------	--------------	---



DIST TO ICS DME	15.6	14.6	13	11.5	11	9	8	7	6	5	3.8	3	2.5
ALT (3° APCH PATH)	5000	4700	4180	3700	3540	2900	2570	2250	1930	1610	1220	970	790



NM BY													
ICS DME 17.7		16		11	9		3.8	2.5		0.7		0.2	
NM TO THR 15	17.5	15.9		10.9	8.8		3.6	2.3		0.5		0	

CATEGORY	A	B	C	D
S-I ILS (4.0% MAP)	390 (381) 1.2			
S-I ILS (2.5% MAP)	470 (461) 1.7			
S-I LOC	790 (781-3.6)			
CIRCLING*	790 (780-2.4)			
ALTERNATE	(1280-4.4)			

**NOTES**

- NO CIRCLING WEST OF RWY 15/33 OR BEYOND 4.4 CS DME TO THE SOUTH.
- ACFT MAY BE RADAR VECTORED TO 15 ICS DME FINAL AT 3700FT.
- COLOUR: SEE SPEC NOTICES.

Changes: KASPI REPLACES SUNNY, Editorial.

BCSII03-177