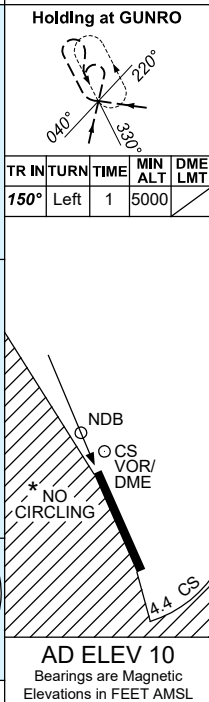
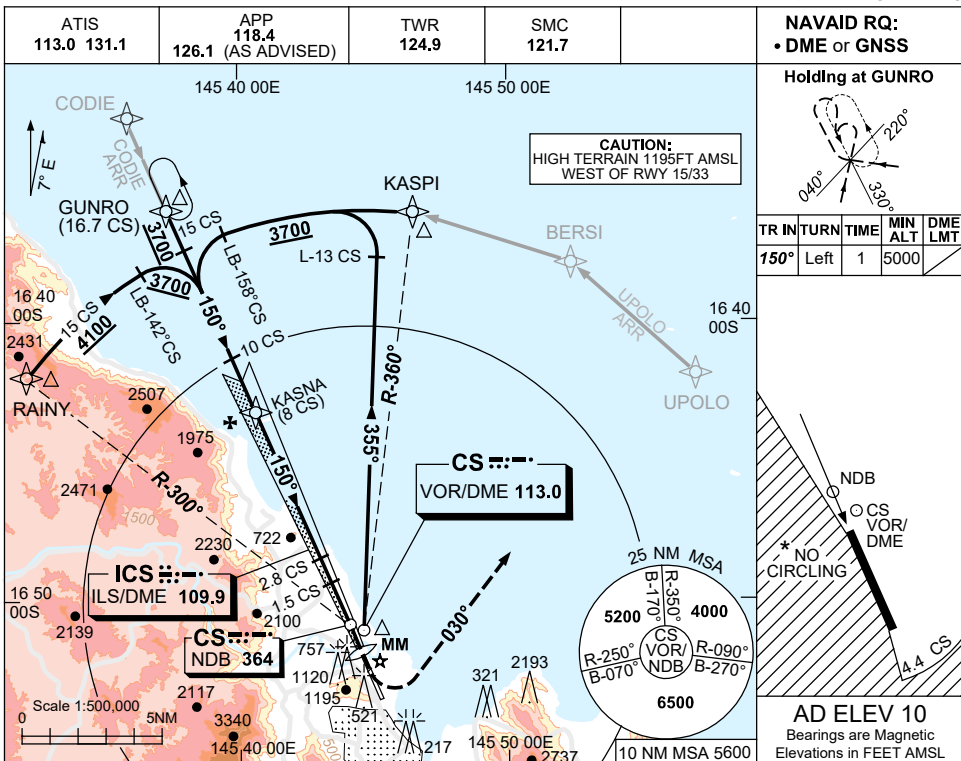


USE QNH

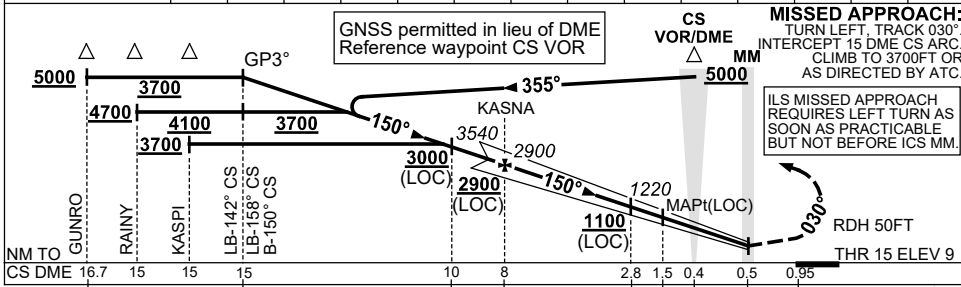
ILS-W or LOC-W RWY 15

30 NOV 2023

CAIRNS/CAIRNS INTL, QLD (YBCS)



NM TO CS DME	14.5	13.6	12	10.5	10	8	7	6	5	4	2.8	2	1.5
ALT (3° APCH PATH)	5000	4700	4180	3700	3540	2900	2580	2260	1930	1610	1220	960	790



NM TO GUNRO	16.7	15	15	15	10	8	2.8	1.5	0.4	0.5	0.95
CS DME	16.7	15	15	15	10	8	2.8	1.5	0.4	0.5	0.95
NM TO THR 15	17.5	15.9	15.9	10.9	8.8	3.6	2.3	0.8	0.5	0	

CATEGORY	A	B	C	D
S-I ILS (4.0% MAP)	390 (381)	1.2	NOT APPLICABLE	
S-I ILS (2.5% MAP)	470 (461)	1.7		
S-I LOC	790 (781-3.6)			
CIRCLING*	790 (780-2.4)			
ALTERNATE	(1280-4.4)			

- NOTES**
- *1. NO CIRCLING WEST OF RWY 15/33 OR BEYOND 4.4 CS DME TO THE SOUTH.
 2. ACFT MAY BE RADAR VECTORED TO 14 CS DME FINAL AT 3700FT.
 3. COLOUR: SEE SPEC NOTICES.

Changes: KASPI REPLACES SUNNY, Editorial.

BCSII01-177