

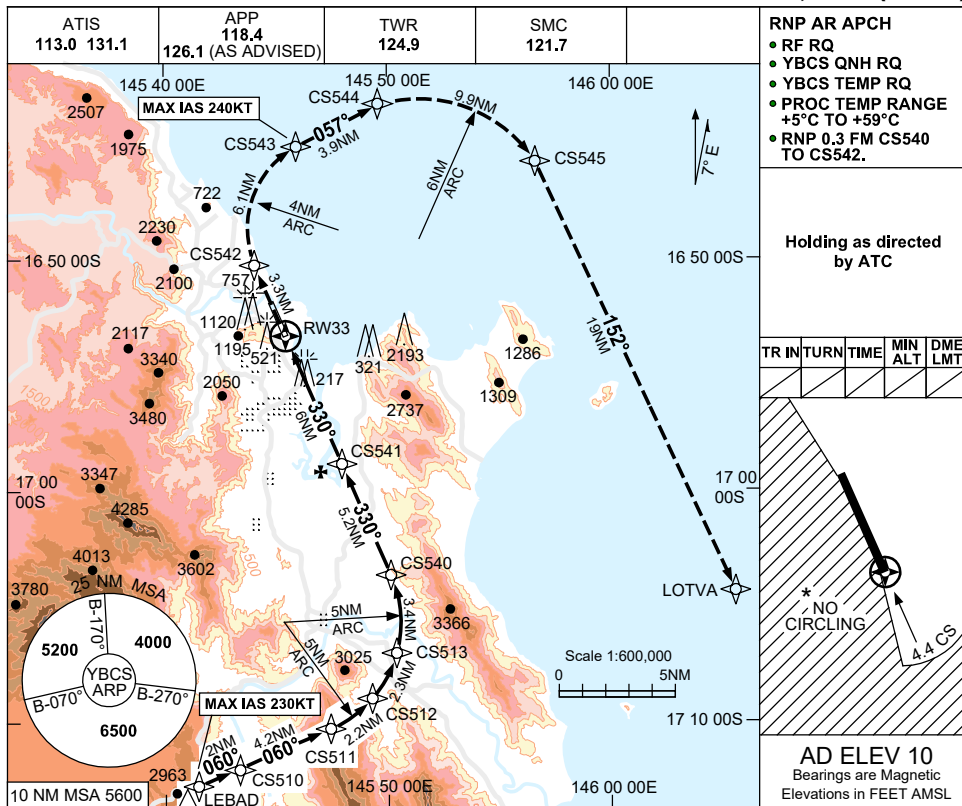
# FOR CASA APPROVED OPERATORS ONLY

USE QNH

RNP W RWY 33 (AR)

30 NOV 2023

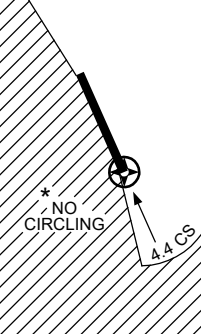
CAIRNS/CAIRNS INTL, QLD (YBCS)



- RNP AR APCH**
- RF RQ
  - YBCS QNH RQ
  - YBCS TEMP RQ
  - PROC TEMP RANGE +5°C TO +59°C
  - RNP 0.3 FM CS540 TO CS542.

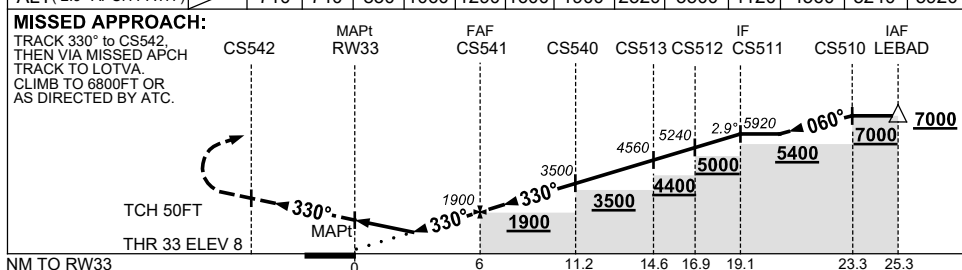
Holding as directed by ATC

TR	IN	TURN	TIME	MIN ALT	DME LMT



**AD ELEV 10**  
Bearings are Magnetic  
Elevations in FEET AMSL

NM TO NEXT WPT	RW33	2.1	2.2	2.5	3.3	4	5	CS541	2	CS540	2	CS513	CS512	CS511
ALT (2.9° APCH PATH)		710	740	830	1060	1290	1600	1900	2520	3500	4120	4560	5240	5920



## NOTES

1. MAX IAS: INITIAL : 230KTT MAP UNTIL CS543: 240KTT
2. NO CIRCLING WEST OF RWY 15/33 OR BEYOND 4.4 DME TO THE SOUTH (2NM S OF THR RWY 33).
3. COLOUR: SEE SPEC NOTICES.

CATEGORY	A	B	C	D
RNP (0.3)(2.5% MAP)		1060 (1050-5.0)		830 (820-4.8)
RNP (0.3)(5.0% MAP)		710 (700-4.1)		740 (730-4.3)
CIRCLING *	NOT AUTHORISED			
ALTERNATE	(1520-4.4)		(1520-6.0)	(1720-7.0)

Changes: LOTVA REPLACES BASIL, Editorial.

BCSGN07-177