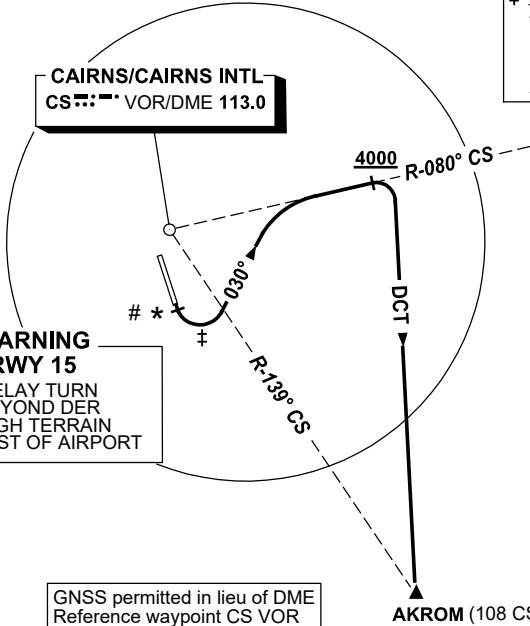


STANDARD INSTRUMENT DEPARTURE (SID)  
RWY 15 AKROM ONE (JET)  
**CAIRNS/CAIRNS INTL, QLD (YBCS)**

13 JUN 2024

|                     |               |              |              |              |                           |  |
|---------------------|---------------|--------------|--------------|--------------|---------------------------|--|
| ATIS<br>113.0 131.1 | ACD<br>128.75 | SMC<br>121.7 | TWR<br>124.9 | DEP<br>118.4 | DEP<br>126.1 (AS ADVISED) | Bearings are Magnetic<br>Elevations in FEET AMSL |
|---------------------|---------------|--------------|--------------|--------------|---------------------------|--|

NOT TO SCALE

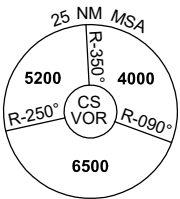


‡ **SPEED AND BANK ANGLE**  
THE FOLLOWING LIMITS ARE  
RQ UNTIL TRACKING 030°  
1. MAX IAS 190KT  
2. MIN 25° BANK

**SPEED**  
MAX IAS 250KT  
BELOW 10,000FT

# **CAUTION**  
CLOSE-IN TREES  
IN RWY 15 DEP AREA.

\* **WARNING**  
**RWY 15**  
DO NOT DELAY TURN  
TO 030° BEYOND DER  
DUE TO HIGH TERRAIN  
SOUTH-EAST OF AIRPORT



GNSS permitted in lieu of DME  
Reference waypoint CS VOR

10 NM MSA 5600

**AKROM ONE DEPARTURE**

- GRAD 4% to 600ft then 3.3%.
- Track 150°
- \* At the earlier of 400ft or DER (2.6 CS DME) turn LEFT track 030°
- Intercept CS R-080°
- When established on CS R-080° and AT or ABV 4000ft turn RIGHT
- Track DCT to AKROM and then as cleared

Changes: CAUTION NOTE.

BCSDP03-179