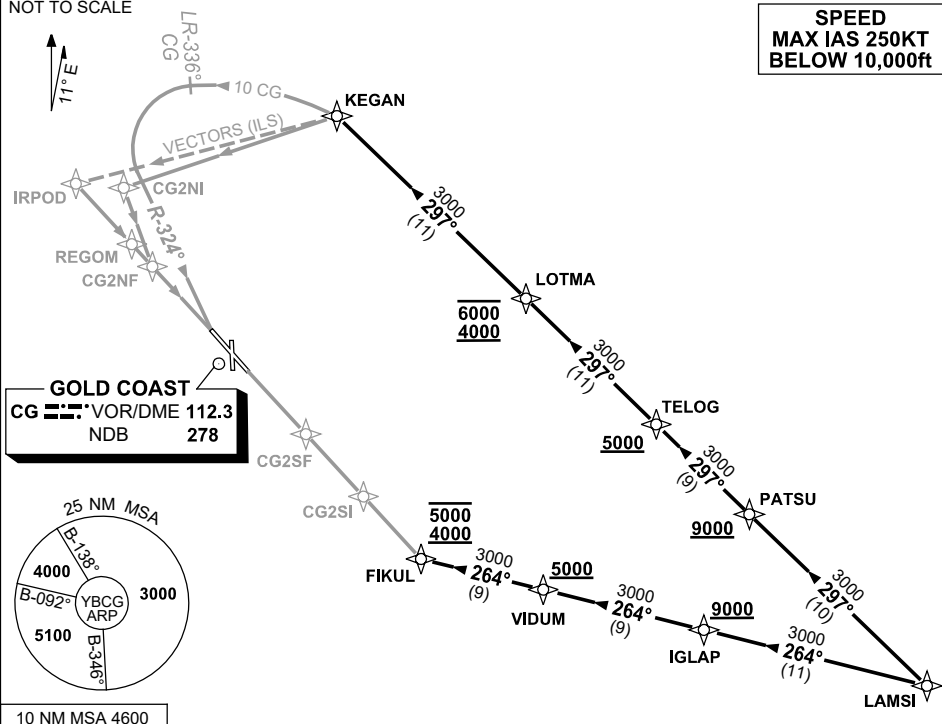


**STANDARD ARRIVAL ROUTE (STAR)  
LAMSI THREE ALPHA ARRIVAL (RNAV)  
GOLD COAST, QLD (YBCG)**

**21 MAR 2024**

ATIS 112.3 134.5 (H24) (TWR HR)	SMC/ACD 121.8	TWR 118.7 (AFRU+PAL)	APP BN 123.5	AWIS (AH) 134.5	Bearings are Magnetic Elevations in FEET AMSL
---------------------------------------	------------------	----------------------------	-----------------	--------------------	--

NOT TO SCALE



10 NM MSA 4600

**ARRIVAL: LAMSI THREE ALPHA**

**RUNWAY 14:**

- From LAMSI track 297° to PATSU  
**Cross** PATSU AT or ABV 9000ft
- Track 297° to TELOG  
**Cross** TELOG AT or ABV 5000ft
- Track 297° to LOTMA  
**Cross** LOTMA BTN 4000ft AND 6000ft
- Track 297° to KEGAN
- At KEGAN track via RNP Z RWY 14, NDB or VOR RWY 14 or radar vectors for ILS-Z RWY 14 or LOC-Z RWY 14.

**RUNWAY 32:**

- From LAMSI track 264° to IGLAP  
**Cross** IGLAP AT or ABV 9000ft
- Track 264° to VIDUM  
**Cross** VIDUM AT or ABV 5000ft
- Track 264° to FIKUL  
**Cross** FIKUL BTN 4000ft and 5000ft
- At FIKUL track via RNP X RWY 32 (AR) or RNP Z RWY 32.

**COMMUNICATIONS FAILURE PROCEDURE  
IF ABLE CTC GOLD COAST ATC ON TEL : 07 55995990**

- Squawk 7600, comply with vertical navigation requirements, but not below MSA.
- Track via the latest STAR clearance to the nominated runway, then fly the most suitable approach in accordance with ERSA EMERG Section 1.5.

Changes: VALIDITY INDICATOR.

BCGSR03-178