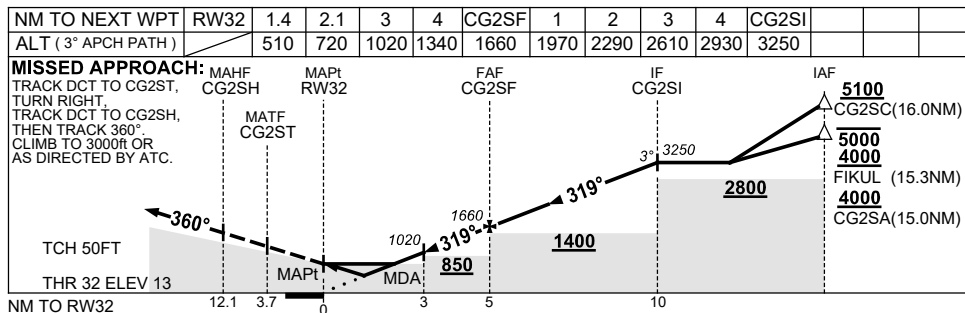
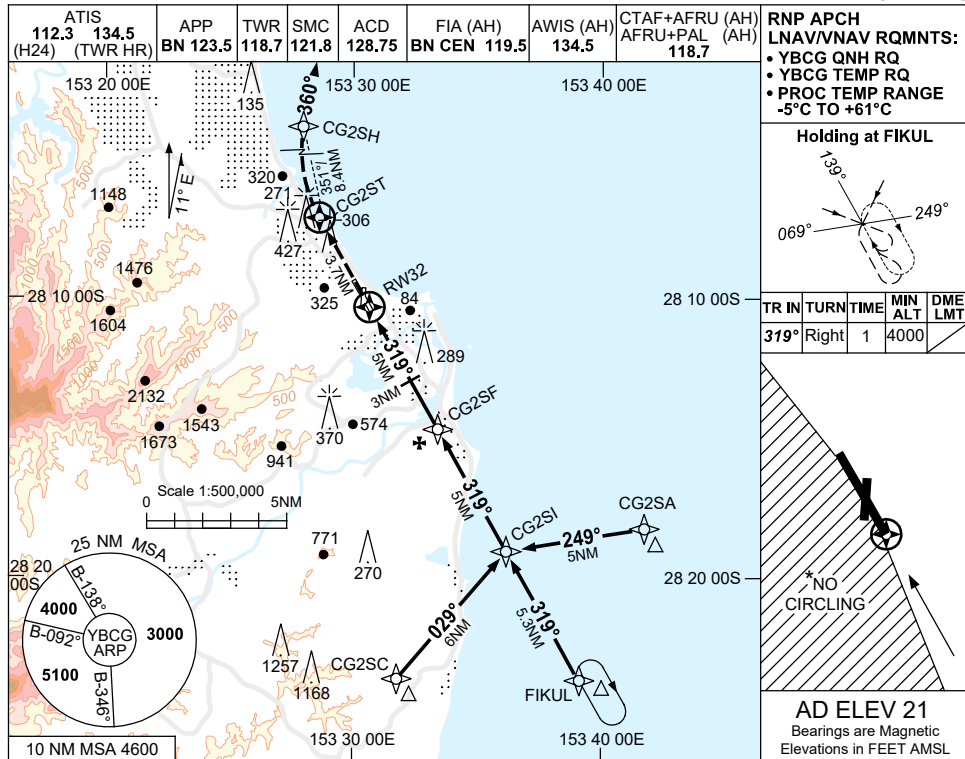


USE QNH

RNP Z RWY 32

21 MAR 2024

GOLD COAST, QLD (YBCG)



CATEGORY	A	B	C	D
LNAV/VNAV		510 (497-2.8)		
LNAV		720 (707-4.0)		
CIRCLING *	860 (839-2.4)		960 (939-4.0)	960 (939-5.0)
ALTERNATE	(1339-4.4)		(1439-6.0)	(1439-7.0)

- NOTES**
- MAX IAS: INITIAL : 210KT.
 - * NO CIRCLING WEST OF RWY 14/32.
 - COLOUR: SEE SPEC NOTICES.

Changes: Editorial.

BCGGN02-178