

**FOR CASA APPROVED STANDARD INSTRUMENT DEPARTURE (SID)
OPERATORS ONLY RW14 RNAV (RNP 0.3) CUDGN FOUR**

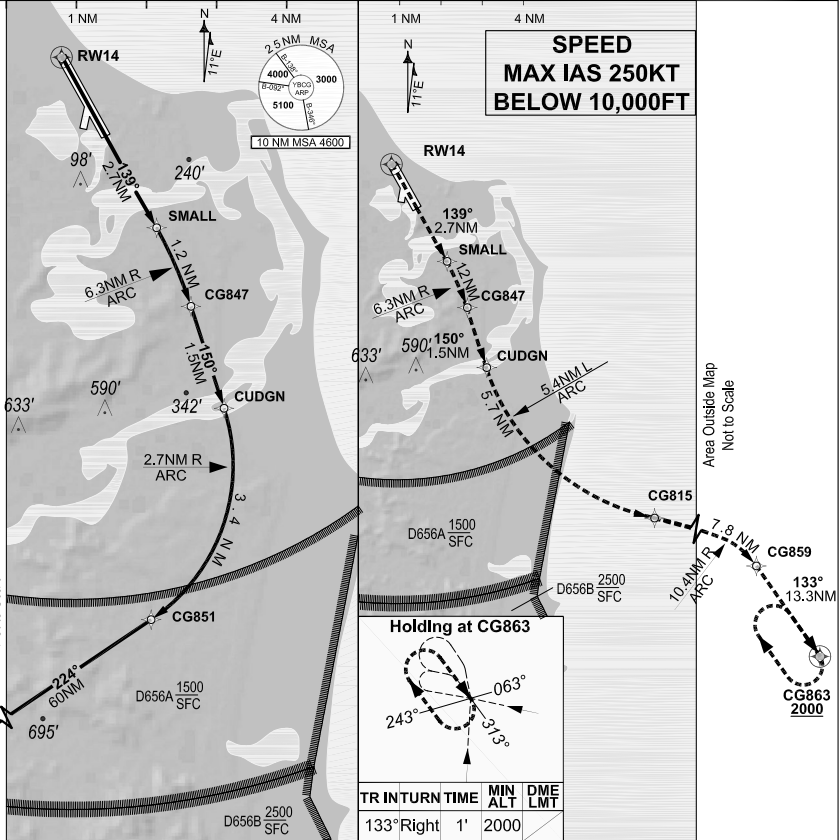
2 DEC 2021

USE QNH

GOLD COAST, QLD (YBCG)

ATIS 112.3 134.5 (H24) (TWR HR)	APP BN 123.5	TWR 118.7	SMC 121.8	ACD 128.75	FIA (AH) BN CEN 119.5	AWIS (AH) 134.5	CTAF+AFRU (AH) AFRU+PAL (AH) 118.7	Bearings are Magnetic Elevations in FEET AMSL
--	------------------------	---------------------	---------------------	----------------------	---------------------------------	---------------------------	---	--

GE PROPRIETARY AND CONFIDENTIAL



RW 14 CUDGN DEPARTURE

RF Required

RWY 14

- Track 139° to SMALL.
- Turn RIGHT via the RNAV (RNP) track to CG847.
- Track 150° to CUDGN.
- Turn RIGHT via the RNAV (RNP) track to CG851.
- Track 224° to APAGI, thence as cleared.

RNAV (RNP 0.3) ENGINE OUT DEPARTURE

RWY 14

ENGINE FAILURE PRIOR TO CUDGN

- Climb to 2000FT.
- Fly the RNAV (RNP) ENGINE OUT DEPARTURE track to CG863.
- Hold at CG863.
- MAX holding IAS 230KT.

ENGINE FAILURE AFTER CUDGN

- Continue via the RNAV (RNP) departure track to APAGI.

202106091719 COPYRIGHT 2021 NAVERUS, INC. USA

Changes: From SUP H55/21.

BCGDP04-169

DO NOT USE FOR NAVIGATION

Prepared by GE Aviation

© Airservices Australia

