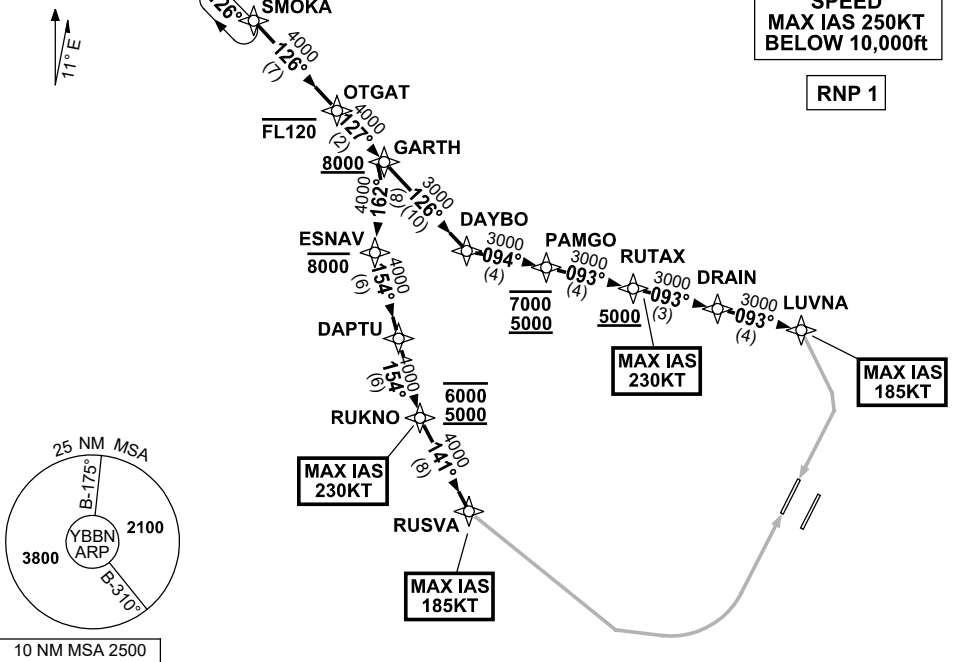


**STANDARD INSTRUMENT ARRIVAL (STAR)  
SMOKA ONE X-RAY ARRIVAL (RNAV) RWY 01L/19R  
BRISBANE, QLD (YBBN)**

21 MAR 2024

ATIS 113.2 125.5	APP NORTH 124.7 SOUTH 125.6 FINALS 119.25	TWR 01L/19R 118.0 01R/19L 120.5	SMC DOM 121.7 SOUTH 122.25	Bearings are Magnetic Elevations in FEET AMSL
---------------------	--	---------------------------------------	----------------------------------	--

NOT TO SCALE



**ARRIVAL: SMOKA ONE XRAY**

**RWY 01L:**

- From SMOKA, track 126° to OTGAT  
**Cross** OTGAT AT or BLW FL120
- Track 127° to GARTH  
**Cross** GARTH AT or ABV 8000ft
- Turn RIGHT track 162° to ESNNAV  
**Cross** ESNNAV AT or BLW 8000ft
- Turn LEFT, track 154° to DAPTU
- Track 154° to RUKNO  
**Cross** RUKNO BTN 5000ft and 6000ft  
MAX IAS 230KT AT RUKNO
- Turn LEFT, track 141° to RUSVA for RNP X RWY 01L (AR) approach  
MAX IAS 185KT AT RUSVA

**RWY 19R:**

- From SMOKA, track 126° to OTGAT  
**Cross** OTGAT AT or BLW FL120
- Track 127° to GARTH  
**Cross** GARTH AT or ABV 8000ft
- Track 126° to DAYBO
- Turn LEFT, track 094° to PAMGO  
**Cross** PAMGO BTN 5000ft and 7000ft
- Turn LEFT, track 093° to RUTAX  
**Cross** RUTAX AT or ABV 5000ft  
MAX IAS 230KT AT RUTAX
- Track 093° to DRAIN
- Track 093° to LUVNA for RNP X RWY 19R (AR) approach  
MAX IAS 185KT AT LUVNA

**COMMUNICATIONS FAILURE: PROCEDURE IN IMC  
IF ABLE CTC BN ATC ON TEL: (07) 3866-3694**

- Squawk 7600, comply with vertical navigation requirements, but not below MSA.
- Track via the latest STAR clearance to the nominated runway, then fly the most suitable approach in accordance with ERSA EMERG Section 1.5.

Changes: PROC NR.

BBNSR54-178