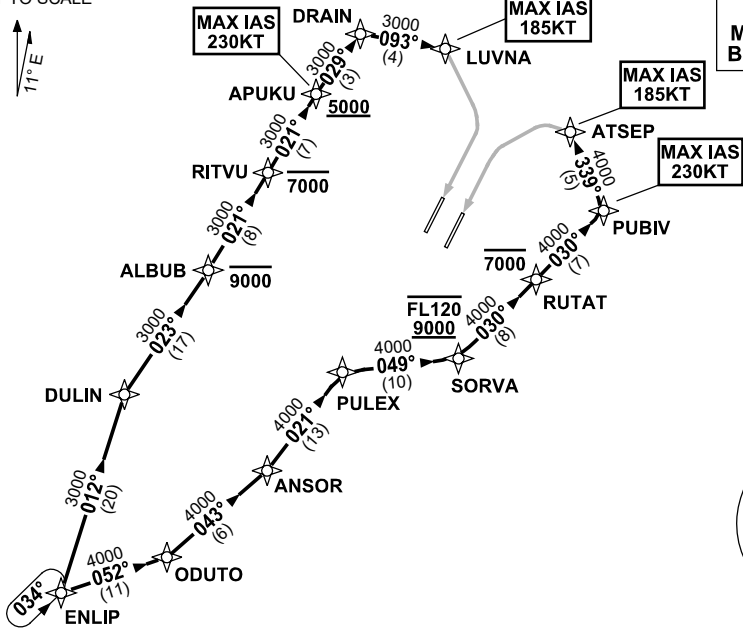


**STANDARD INSTRUMENT ARRIVAL (STAR)  
ENLIP TWO X-RAY ARRIVAL (RNAV) RWY 19L/19R  
BRISBANE, QLD (YBBN)**

21 MAR 2024

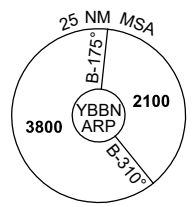
ATIS 113.2 125.5	APP NORTH 124.7 SOUTH 125.6 FINALS 119.25	TWR 01L/19R 118.0 01R/19L 120.5	SMC DOM 121.7 SOUTH 122.25	Bearings are Magnetic Elevations in FEET AMSL
---------------------	--	---------------------------------------	----------------------------------	--

NOT TO SCALE



**SPEED  
MAX IAS 250KT  
BELOW 10,000ft**

**RNP 1**



10 NM MSA 2500

**ARRIVAL: ENLIP TWO X-RAY**

**RWY 19L:**

- From ENLIP, track 052° to ODUTO
- Turn LEFT, track 043° to ANSOR
- Turn LEFT, track 021° to PULEX
- Turn RIGHT, track 049° to SORVA  
**Cross** SORVA BTN 9000ft and FL120
- Turn LEFT, track 030° to RUTAT  
**Cross** RUTAT AT or BLW 7000ft
- Track 030° to PUBIV  
MAX IAS 230KT AT PUBIV
- Turn LEFT, track 339° to ATSEP for RNP X or RNP S RWY 19L (AR) approach  
MAX IAS 185KT AT ATSEP

**RWY 19R:**

- From ENLIP, track 012° to DULIN
- Turn RIGHT, track 023° to ALBUB  
**Cross** ALBUB AT or BLW 9000ft
- Turn LEFT, track 021° to RITVU  
**Cross** RITVU AT or BLW 7000ft
- Track 021° to APUKU  
**Cross** APUKU AT or ABV 5000ft  
MAX IAS 230KT AT APUKU
- Turn RIGHT, track 029° to DRAIN
- Turn RIGHT, track 093° to LUVNA for RNP X RWY 19R (AR) approach  
MAX IAS 185KT AT LUVNA

**COMMUNICATIONS FAILURE: PROCEDURE IN IMC  
IF ABLE CTC BN ATC ON TEL: (07) 3866-3694**

- Squawk 7600, comply with vertical navigation requirements, but not below MSA.
- Track via the latest STAR clearance to the nominated runway, then fly the most suitable approach in accordance with ERSA EMERG Section 1.5.

Changes: PROC NR, RNP S RWY 19L (AR).

BBNSR53-178