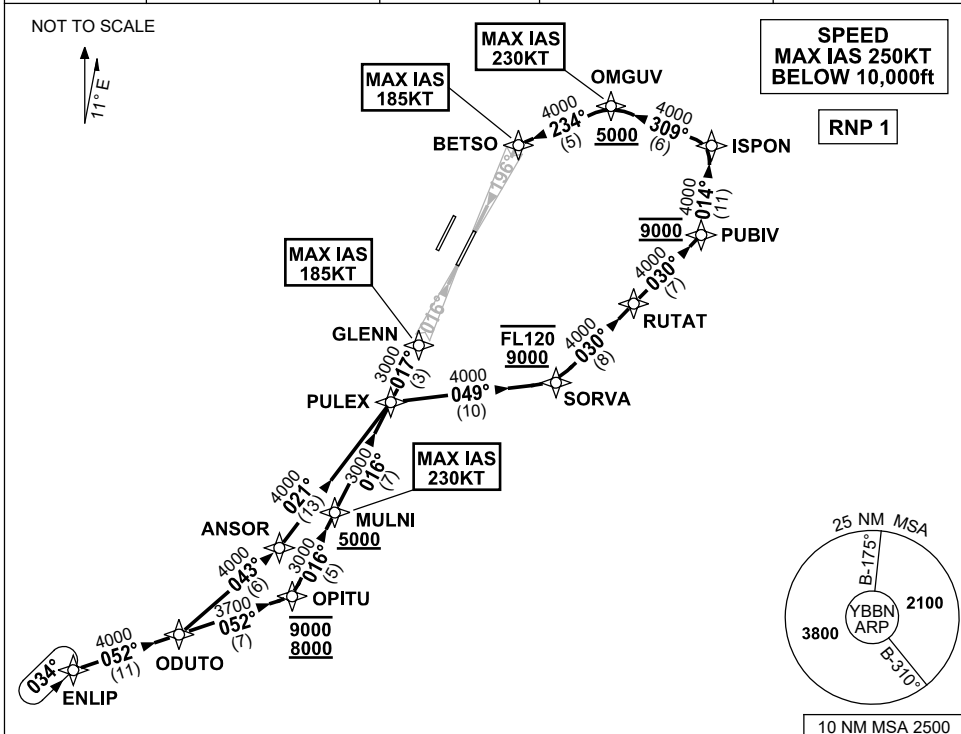


**STANDARD INSTRUMENT ARRIVAL (STAR)  
ENLIP TWO ALPHA ARRIVAL (RNAV) RWY 01R/19L  
BRISBANE, QLD (YBBN)**

21 MAR 2024

ATIS 113.2 125.5	APP NORTH 124.7 SOUTH 125.6 FINALS 119.25	TWR 01R/19L 120.5 01L/19R 118.0	SMC DOM 121.7 SOUTH 122.25	Bearings are Magnetic Elevations in FEET AMSL
---------------------	--	---------------------------------------	-------------------------------	--



**ARRIVAL: ENLIP TWO ALPHA**

**RWY 01R:**

- From ENLIP, track 052° to ODUTO
- Track 052° to OPITU  
**Cross** OPITU BTN 8000ft and 9000ft
- Turn LEFT, track 016° to MULNI  
**Cross** MULNI AT or ABV 5000ft  
MAX IAS 230KT AT MULNI
- Track 016° to PULEX
- Turn RIGHT, track 017° to GLENN for ILS, RNP Z, LOC or RNP T RWY 01R approach  
MAX IAS 185KT AT GLENN

**RWY 19L:**

- From ENLIP, track 052° to ODUTO
- Turn LEFT, track 043° to ANSOR
- Turn LEFT, track 021° to PULEX
- Turn RIGHT, track 049° to SORVA  
**Cross** SORVA BTN 9000ft and FL120
- Turn LEFT, track 030° to RUTAT
- Track 030° to PUBIV  
**Cross** PUBIV AT 9000ft
- Turn LEFT, track 014° to ISPON
- Turn LEFT, track 309° to OMGUV  
**Cross** OMGUV AT or ABV 5000ft  
MAX IAS 230KT AT OMGUV
- Turn LEFT, track 234° to BETSO for ILS, RNP Z, LOC or RNP T RWY 19L approach  
MAX IAS 185KT AT BETSO

**COMMUNICATIONS FAILURE: PROCEDURE IN IMC  
IF ABLE CTC BN ATC ON TEL: (07) 3866-3694**

- Squawk 7600, comply with vertical navigation requirements, but not below MSA.
- Track via the latest STAR clearance to the nominated runway, then fly the most suitable approach in accordance with ERSA EMERG Section 1.5.

Changes: PROC NR, RNP T RWY 01R/19L.

BBNSR52-178