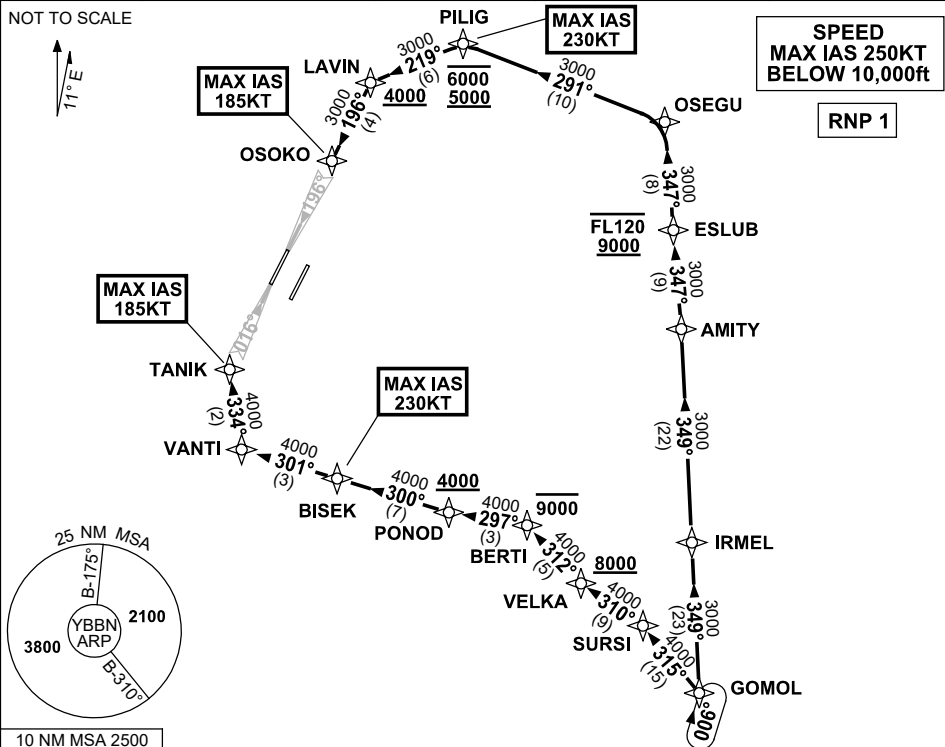


**STANDARD INSTRUMENT ARRIVAL (STAR)
GOML THREE ALPHA ARRIVAL (RNAV) RWY 01L/19R
BRISBANE, QLD (YBBN)**

21 MAR 2024

ATIS 113.2 125.5	APP NORTH 124.7 SOUTH 125.6 FINALS 119.25	TWR 01L/19R 118.0 01R/19L 120.5	SMC DOM 121.7 NORTH 124.05 SOUTH 122.25	Bearings are Magnetic Elevations in FEET AMSL
---------------------	--	---------------------------------------	--	--

NOT TO SCALE



ARRIVAL: GOML THREE ALPHA

RWY 01L:

- From GOMOL, track 315° to SURSI
- Turn LEFT, track 310° to VELKA
Cross VELKA AT or ABV 8000ft
- Turn RIGHT, track 312° to BERTI
Cross BERTI AT or BLW 9000ft
- Turn LEFT, track 297° to PONOD
Cross PONOD AT or ABV 4000ft
- Turn RIGHT, track 300° to BISEK
MAX IAS 230KT AT BISEK
- Track 301° to VANTI
- Turn RIGHT, track 334° to TANIK for ILS,
RNP Z or LOC RWY 01L approach
MAX IAS 185KT AT TANIK

RWY 19R:

- From GOMOL, track 349° to IRMEL
- Track 349° to AMITY
- Turn LEFT, track 347° to ESLEUB
Cross ESLEUB BTN 9000ft and FL120
- Track 347° to OSEGU
- Turn LEFT, track 291° to PILIG
Cross PILIG BTN 5000ft and 6000ft
MAX IAS 230KT AT PILIG
- Turn LEFT, track 219° to LAVIN
Cross LAVIN AT or ABV 4000ft
- Turn LEFT, track 196° to OSOKO for ILS,
RNP Z or LOC RWY 19R approach
MAX IAS 185KT AT OSOKO

**COMMUNICATIONS FAILURE: PROCEDURE IN IMC
IF ABLE CTC BN ATC ON TEL: (07) 3866-3694**

- Squawk 7600, comply with vertical navigation requirements, but not below MSA.
- Track via the latest STAR clearance to the nominated runway, then fly the most suitable approach in accordance with ERSA EMERG Section 1.5.

Changes: PROC NR.

BBNSR47-178