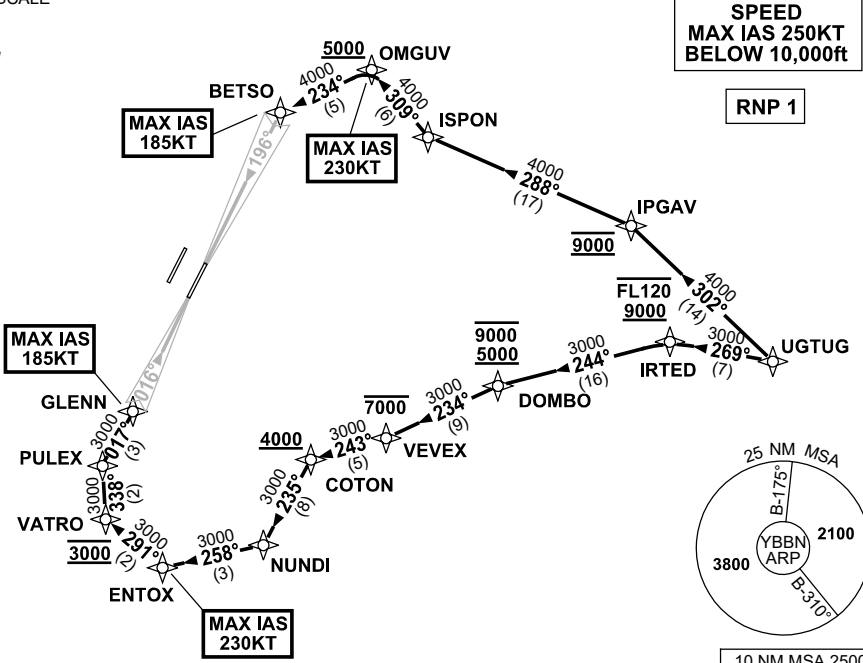


**STANDARD INSTRUMENT ARRIVAL (STAR)  
UGTUG TWO ALPHA ARRIVAL (RNAV) RWY 01R/19L  
BRISBANE, QLD (YBBN)**

21 MAR 2024

ATIS 113.2 125.5	APP NORTH 124.7 SOUTH 125.6 FINALS 119.25	TWR 01R/19L 120.5 01L/19R 118.0	SMC DOM 121.7 SOUTH 122.25	Bearings are Magnetic Elevations in FEET AMSL
---------------------	----------------------------------------------	---------------------------------------	----------------------------------	--------------------------------------------------

NOT TO SCALE



**ARRIVAL: UGTUG TWO ALPHA  
RWY 01R:**

- From UGTUG, track 269° to IRTED  
**Cross** IRTED BTN 9000ft and FL120
- Turn LEFT, track 244° to DOMBO  
**Cross** DOMBO BTN 5000ft and 9000ft
- Turn LEFT, track 234° to VEVEX  
**Cross** VEVEX AT or BLW 7000ft
- Turn RIGHT, track 243° to COTON  
**Cross** COTON AT or ABV 4000ft
- Turn LEFT, track 235° to NUNDI
- Turn RIGHT, track 258° to ENTOX  
MAX IAS 230KT AT ENTOX
- Turn RIGHT, track 291° to VATRO  
**Cross** VATRO AT 3000ft
- Turn RIGHT, track 338° to PULEX
- Turn RIGHT, track 017° to GLENN for ILS,  
RNP Z, LOC or RNP T RWY 01R approach  
MAX IAS 185KT AT GLENN

**RWY 19L:**

- From UGTUG, track 302° to IPGAV  
**Cross** IPGAV AT 9000ft
- Turn LEFT, track 288° to ISPON
- Turn RIGHT, track 309° to OMGUV  
**Cross** OMGUV AT or ABV 5000ft  
MAX IAS 230KT AT OMGUV
- Turn LEFT, track 234° to BETSO for ILS,  
RNP Z, LOC or RNP T RWY 19L approach  
MAX IAS 185KT AT BETSO

**COMMUNICATIONS FAILURE: PROCEDURE IN IMC  
IF ABLE CTC BN ATC ON TEL: (07) 3866-3694**

- Squawk 7600, comply with vertical navigation requirements, but not below MSA.
- Track via the latest STAR clearance to the nominated runway, then fly the most suitable approach in accordance with ERSA EMERG Section 1.5.

Changes: PROC NR, RNP T RWY 01R/19L.

BBNSR43-138