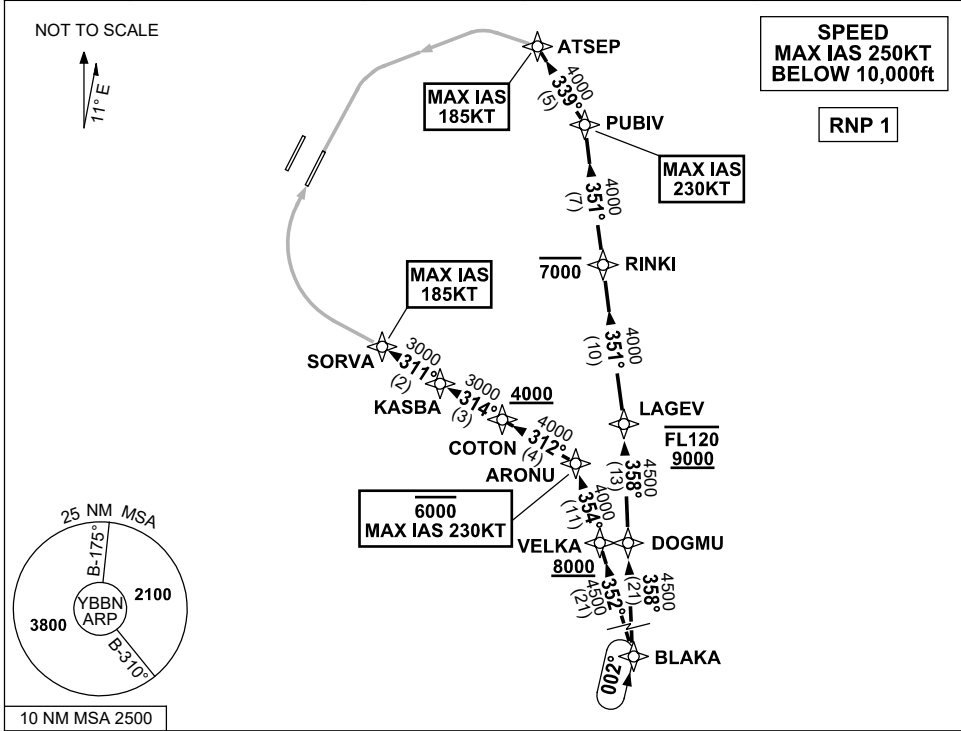


**STANDARD INSTRUMENT ARRIVAL (STAR)
BLAKA FIVE X-RAY ARRIVAL (RNAV) RWY 01R/19L
BRISBANE, QLD (YBBN)**

21 MAR 2024

ATIS 113.2 125.5	APP NORTH SOUTH FINALS 124.7 125.6 119.25	TWR 01R/19L 120.5 01L/19R 118.0	SMC DOM SOUTH 121.7 122.25	Bearings are Magnetic Elevations in FEET AMSL
---------------------	---	---------------------------------------	----------------------------------	--



**SPEED
MAX IAS 250KT
BELOW 10,000ft**

RNP 1

ARRIVAL: BLAKA FIVE X-RAY

RWY 01R:

- From BLAKA, track 352° to VELKA
Cross VELKA AT or ABV 8000ft
- Turn RIGHT, track 354° to ARONU
Cross ARONU AT or BLW 6000ft
MAX IAS 230KT AT ARONU
- Turn LEFT, track 312° to COTON
Cross COTON AT or ABV 4000ft
- Turn RIGHT, track 314° to KASBA
- Turn LEFT, track 311° to SORVA for the
RNP X or RNP S RWY 01R (AR) approach
MAX IAS 185KT AT SORVA

RWY 19L:

- From BLAKA, track 358° to DOGMU
- Turn LEFT, track 358° to LAGEV
Cross LAGEV BTN 9000ft and FL120
- Turn LEFT, track 351° to RINKI
Cross RINKI AT or BLW 7000ft
- Track 351° to PUBIV
MAX IAS 230KT AT PUBIV
- Turn LEFT, track 339° to ATSEP for the
RNP X or RNP S RWY 19L (AR) approach
MAX IAS 185KT AT ATSEP

**COMMUNICATIONS FAILURE: PROCEDURE IN IMC
IF ABLE CTC BN ATC ON TEL: (07) 3866-3694**

- Squawk 7600, comply with vertical navigation requirements, but not below MSA.
- Track via the latest STAR clearance to the nominated runway, then fly the most suitable approach in accordance with ERSA EMERG Section 1.5.

Changes: PROC NR, RNP S RWY 01R/19L (AR).

BBNSR39 - 178