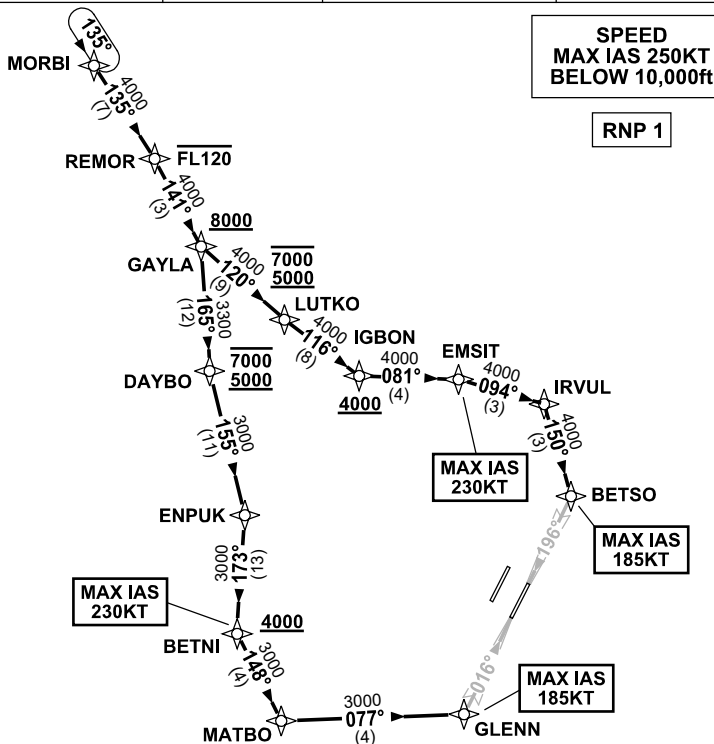
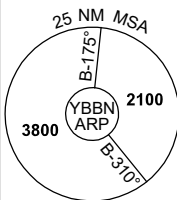


**STANDARD INSTRUMENT ARRIVAL (STAR)  
MORBI TWO ALPHA ARRIVAL (RNAV) RWY 01R/19L  
BRISBANE, QLD (YBBN)**

13 JUN 2024

ATIS 113.2 125.5	APP NORTH 124.7 SOUTH 125.6 FINALS 119.25	TWR 01R/19L 120.5 01L/19R 118.0	SMC DOM 121.7 SOUTH 122.25	Bearings are Magnetic Elevations in FEET AMSL
---------------------	--	---------------------------------------	----------------------------------	--

NOT TO SCALE



**ARRIVAL: MORBI TWO ALPHA**

**RWY 01R:**

- From MORBI track 135° to REMOR  
**Cross** REMOR AT or BLW FL120
- Turn **RIGHT**, track 141° to GAYLA  
**Cross** GAYLA AT or ABV 8000ft
- Turn **RIGHT**, track 165° to DAYBO  
**Cross** DAYBO BTN 5000ft and 7000ft
- Turn **LEFT**, track 155° to ENPUK
- Turn **RIGHT**, track 173° to BETNI  
**Cross** BETNI AT or ABV 4000ft  
MAX IAS 230KT AT BETNI
- Turn **LEFT**, track 148° to MATBO
- Turn **LEFT**, track 077° to GLENN for ILS,  
RNP Z, LOC or RNP T RWY 01R approach  
MAX IAS 185KT AT GLENN

**RWY 19L:**

- From MORBI track 135° to REMOR  
**Cross** REMOR AT or BLW FL120
- Turn **RIGHT**, track 141° to GAYLA  
**Cross** GAYLA AT or ABV 8000ft
- Turn **LEFT**, track 120° to LUTKO  
**Cross** LUTKO BTN 5000ft and 7000ft
- Turn **LEFT**, track 116° to IGBON  
**Cross** IGBON AT or ABV 4000ft
- Turn **LEFT**, track 081° to EMSIT  
MAX IAS 230KT AT EMSIT
- Turn **RIGHT**, track 094° to IRVUL
- Turn **RIGHT**, track 150° to BETSO for ILS,  
RNP Z, LOC or RNP T RWY 19L approach  
MAX IAS 185KT AT BETSO

**COMMUNICATIONS FAILURE: PROCEDURE IN IMC  
IF ABLE CTC BN ATC ON TEL: (07) 3866-3694**

- Squawk 7600, comply with vertical navigation requirements, but not below MSA.
- Track via the latest STAR clearance to the nominated runway, then fly the most suitable approach in accordance with ERSA EMERG Section 1.5.

Changes: RWY 19L TEXT CORRECTION.

BBNSR36-179