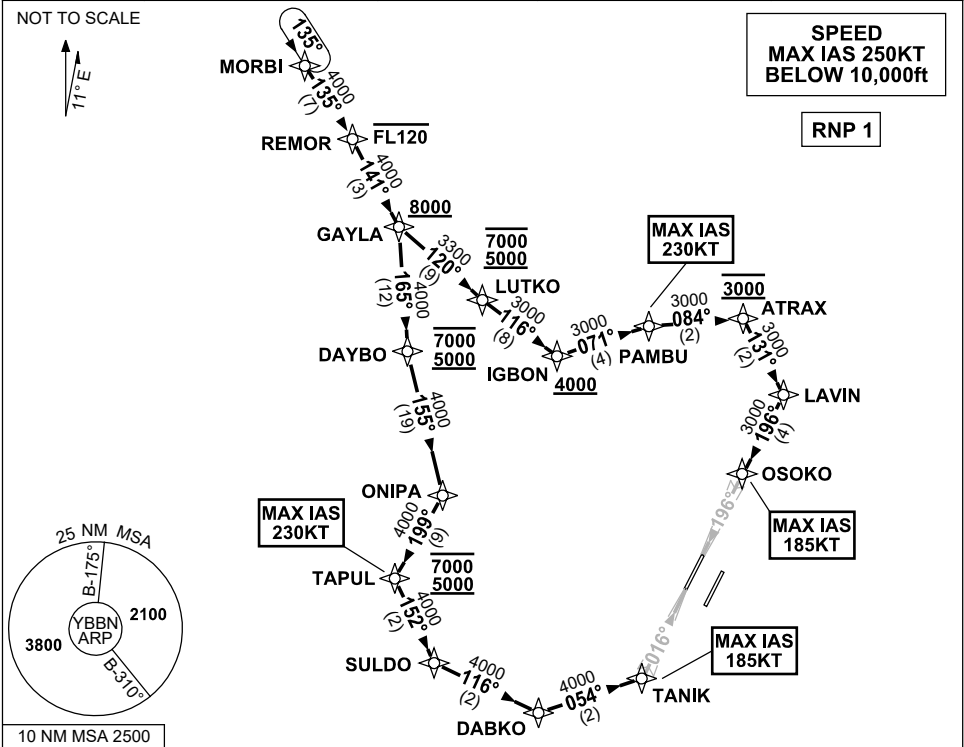


**STANDARD INSTRUMENT ARRIVAL (STAR)
MORBI TWO ALPHA ARRIVAL (RNAV) RWY 01L/19R
BRISBANE, QLD (YBBN)**

21 MAR 2024

ATIS 113.2 125.5	APP NORTH 124.7 SOUTH 125.6 FINALS 119.25	TWR 01L/19R 118.0 01R/19L 120.5	SMC DOM 121.7 SOUTH 122.25	Bearings are Magnetic Elevations in FEET AMSL
---------------------	--	---------------------------------------	----------------------------------	--



- | | |
|--|---|
| <p>ARRIVAL: MORBI TWO ALPHA RWY 01L:</p> <ul style="list-style-type: none"> • From MORBI track 135° to REMOR
Cross REMOR AT or BLW FL120 • Turn RIGHT, track 141° to GAYLA
Cross GAYLA AT or ABV 8000ft • Turn RIGHT, track 165° to DAYBO
Cross DAYBO BTN 5000ft and 7000ft • Turn LEFT, track 155° to ONIPA • Turn RIGHT, track 199° to TAPUL
Cross TAPUL BTN 5000ft and 7000ft • Turn LEFT, track 152° to SULDO • Turn LEFT, track 116° to DABKO • Turn LEFT, track 054° to TANIK for ILS, RNP Z or LOC RWY 01L approach
MAX IAS 185KT AT TANIK | <p>RWY 19R:</p> <ul style="list-style-type: none"> • From MORBI track 135° to REMOR
Cross REMOR AT or BLW FL120 • Turn RIGHT, track 141° to GAYLA
Cross GAYLA AT or ABV 8000ft • Turn LEFT, track 120° to LUTKO
Cross LUTKO BTN 5000ft and 7000ft • Turn LEFT, track 116° to IGBON
Cross IGBON AT or ABV 4000ft • Turn LEFT, track 071° to PAMBU
MAX IAS 230KT AT PAMBU • Turn RIGHT, track 084° to ATRAX
Cross ATRAX AT 3000ft • Turn RIGHT, track 131° to LAVIN • Turn RIGHT, track 196° to OSOKO for ILS, RNP Z or LOC RWY 19R approach
MAX IAS 185KT AT OSOKO |
|--|---|

COMMUNICATIONS FAILURE: PROCEDURE IN IMC
IF ABLE CTC BN ATC ON TEL: (07) 3866-3694

- Squawk 7600, comply with vertical navigation requirements, but not below MSA.
- Track via the latest STAR clearance to the nominated runway, then fly the most suitable approach in accordance with ERSA EMERG Section 1.5.

Changes: PROC NR.

BBNSR35-178