

**STANDARD INSTRUMENT ARRIVAL (STAR)
WOODY TWO VICTOR ARRIVAL (RNAV) RWY 01L/19R
BRISBANE, QLD (YBBN)**

21 MAR 2024

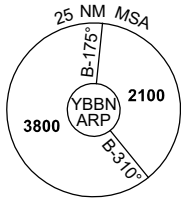
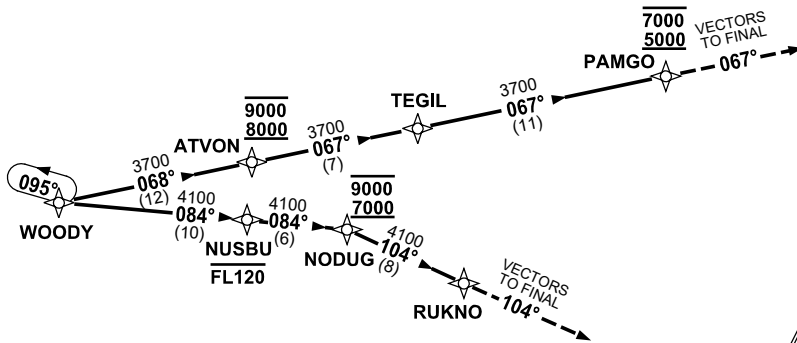
ATIS 113.2 125.5	APP NORTH 124.7 SOUTH 125.6 FINALS 119.25	TWR 01L/19R 118.0 01R/19L 120.5	SMC DOM 121.7 SOUTH 122.25	Bearings are Magnetic Elevations in FEET AMSL
---------------------	--	---------------------------------------	----------------------------------	--

NOT TO SCALE



**SPEED
MAX IAS 250KT
BELOW 10,000ft**

RNP 1



10 NM MSA 2500

ARRIVAL: WOODY TWO VICTOR

RWY 01L:

- From WOODY track 084° to NUSBU
Cross NUSBU AT or BLW FL120
- Track 084° to NODUG
Cross NODUG BTN 7000ft and 9000ft
- Turn RIGHT, track 104° to RUKNO
- Track 104°, EXPECT radar vectors to final

RWY 19R:

- From WOODY track 068° to ATVON
Cross ATVON BTN 8000ft and 9000ft
- Track 067° to TEGIL
- Track 067° to PAMGO
Cross PAMGO BTN 5000ft and 7000ft
- Track 067°, EXPECT radar vectors to final

**COMMUNICATIONS FAILURE: PROCEDURE IN IMC
IF ABLE CTC BN ATC ON TEL: (07) 3866-3694**

- Squawk 7600, comply with vertical navigation requirements, but not below MSA.
- Track via the latest STAR clearance to the nominated runway, then fly the most suitable approach in accordance with ERSA EMERG Section 1.5.

Changes: PROC NR.

BBNSR33-178