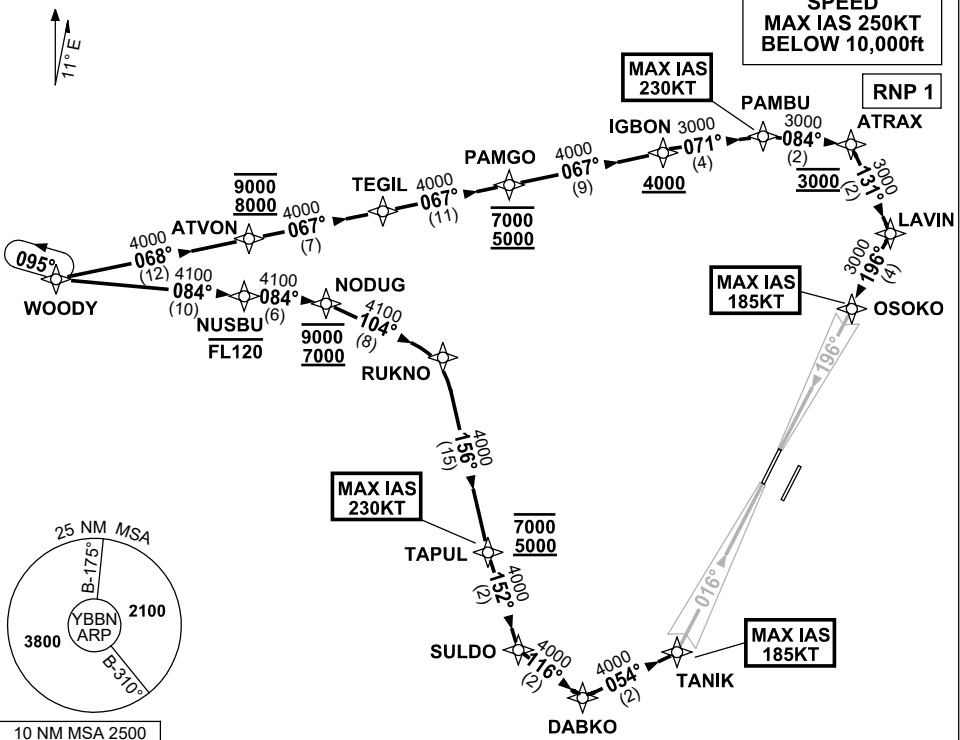


**STANDARD INSTRUMENT ARRIVAL (STAR)
WOODY TWO ALPHA ARRIVAL (RNAV) RWY 01L/19R
BRISBANE, QLD (YBBN)**

21 MAR 2024

ATIS 113.2 125.5	APP NORTH 124.7 SOUTH 125.6 FINALS 119.25	TWR 01L/19R 118.0 01R/19L 120.5	SMC NORTH 124.05 DOM 121.7 SOUTH 122.25	Bearings are Magnetic Elevations in FEET AMSL
---------------------	--	---------------------------------------	--	--

NOT TO SCALE



ARRIVAL: WOODY TWO ALPHA

RWY 01L:

- From WOODY track 084° to NUSBU
Cross NUSBU AT or BLW FL120
- Track 084° to NODUG
Cross NODUG BTN 7000ft and 9000ft
- Turn RIGHT, track 104° to RUKNO
- Turn RIGHT, track 156° to TAPUL
Cross TAPUL BTN 5000ft and 7000ft
MAX IAS 230KT AT TAPUL
- Turn LEFT, track 152° to SULDO
- Turn LEFT, track 116° to DABKO
- Turn LEFT, track 054° to TANIK for ILS,
RNP Z or LOC RWY 01L approach
MAX IAS 185KT AT TANIK

RWY 19R:

- From WOODY track 068° to ATVON
Cross ATVON BTN 8000ft and 9000ft
- Track 067° to TEGIL
- Track 067° to PAMGO
Cross PAMGO BTN 5000ft and 7000ft
- Track 067° to IGBON
Cross IGBON AT or ABV 4000ft
- Turn RIGHT, track 071° to PAMBU
MAX IAS 230KT AT PAMBU
- Turn RIGHT, track 084° to ATRAX
Cross ATRAX AT 3000ft
- Turn RIGHT, track 131° to LAVIN
- Turn RIGHT, track 196° to OSOKO for ILS,
RNP Z or LOC RWY 19R approach
MAX IAS 185KT AT OSOKO

**COMMUNICATIONS FAILURE: PROCEDURE IN IMC
IF ABLE CTC BN ATC ON TEL: (07) 3866-3694**

- Squawk 7600, comply with vertical navigation requirements, but not below MSA.
- Track via the latest STAR clearance to the nominated runway, then fly the most suitable approach in accordance with ERSA EMERG Section 1.5.

Changes: PROC NR.

BBNSR31-178