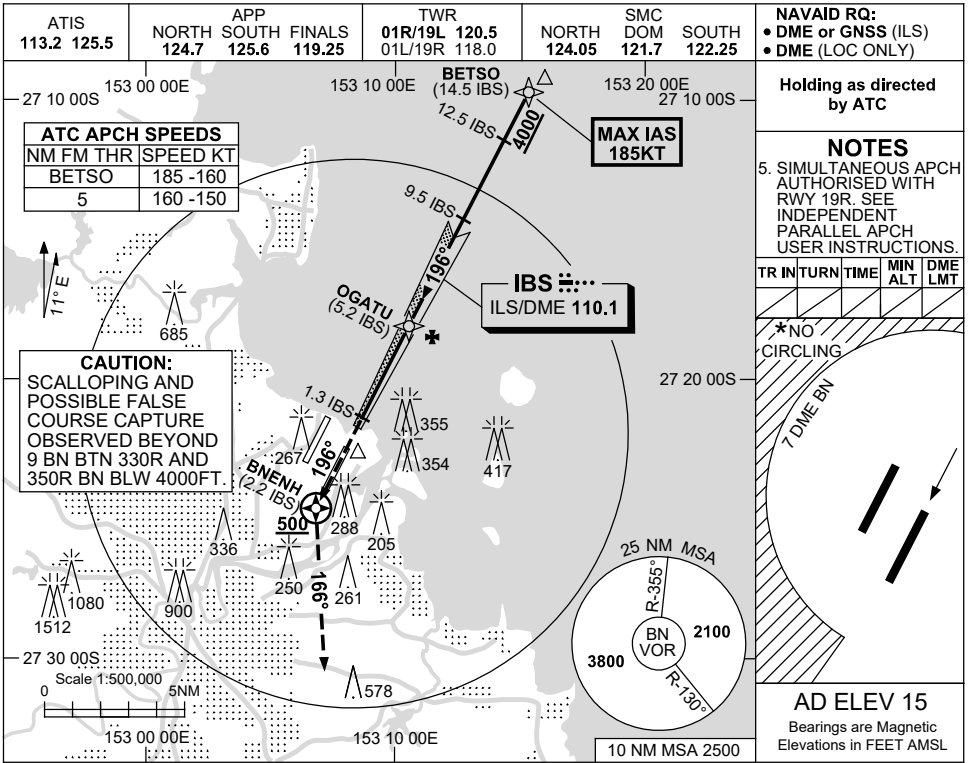


USE QNH

ILS or LOC RWY 19L
BRISBANE, QLD (YBBN)

8 SEP 2022



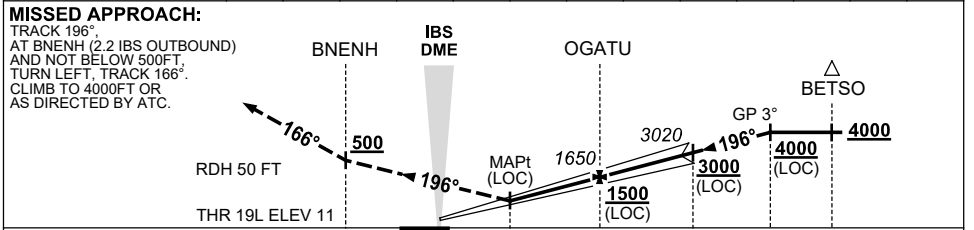
Holding as directed by ATC

NOTES
 5. SIMULTANEOUS APCH AUTHORISED WITH RWY 19R. SEE INDEPENDENT PARALLEL APCH USER INSTRUCTIONS.

TR	INTURN	TIME	MIN ALT	DME LMT
*NO CIRCLING				

AD ELEV 15
 Bearings are Magnetic
 Elevations in FEET AMSL

NM TO IBS DME	1.3	2	3	4	5.2	6	7	8	9	9.5	10	11	12.5
ALT (3° APCH PATH)	430	640	960	1280	1650	1920	2240	2550	2870	3020	3190	3510	4000



NM TO IBS DME	2.2	0	1.3	5.2	9.5	12.5	14.5
NM TO THR 19L	2.3	0.20	1.1	5	9.3	12.4	14.4

CATEGORY	NOTES			
	A	B	C	D
S-I ILS		220 (209) 0.8	550 RVR	
S-I LOC		430 (415-1.4)		
CIRCLING *	650 (635-2.4)		780 (765-4.0)	850 (835-5.0)
ALTERNATE*	(1135-4.4)		(1265-6.0)	(1335-7.0)

*2. CAT D ACFT NO CIRCLING WEST OF 01R/19L BEYOND 7 DME BN.
 *3. SPECIAL ALTN MNM 700/2.5 KM.
 *4. ACFT MAY BE RADAR VECTORED TO FNA.

Changes: GRID COORDS CORRECTION.

BBNII09-172