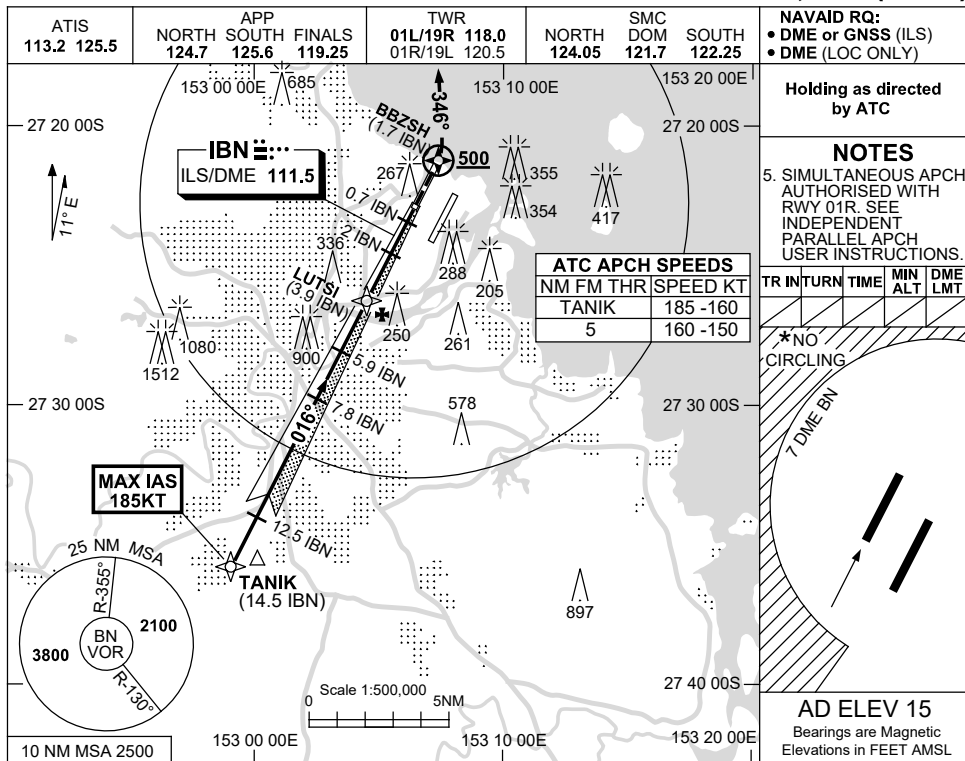


USE QNH

ILS or LOC RWY 01L
BRISBANE, QLD (YBBN)

21 MAR 2024



NAVAID RQ:
• DME or GNSS (ILS)
• DME (LOC ONLY)

Holding as directed by ATC

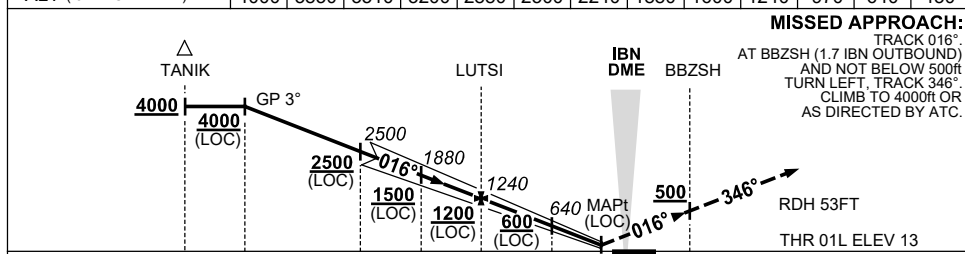
NOTES
5. SIMULTANEOUS APCH AUTHORISED WITH RWY 01R. SEE INDEPENDENT PARALLEL APCH USER INSTRUCTIONS.

TR	INTURN	TIME	MIN ALT	DME LMT

*NO CIRCLING

AD ELEV 15
Bearings are Magnetic
Elevations in FEET AMSL

NM TO IBN DME	12.5	12	11	10	9	7.8	7	5.9	5	3.9	3	2	1.3
ALT (3° APCH PATH)	4000	3830	3510	3200	2880	2500	2240	1880	1600	1240	970	640	430



NM TO IBN DME	14.5	12.5	7.8	5.9	3.9	2	0.7	0	1.7
NM TO THR 01L	14.4	12.4	7.7	5.7	3.7	1.8	0.5	0.2	1.9

NOTES

- MAX IAS:
TANIKA : 185KT.
- CAT D ACFT NO CIRCLING WEST OF 01R/19L BEYOND 7 DME BN.
- SPECIAL ALTN MNM 700/2.5 KM.
- ACFT MAY BE RADAR VECTORED TO FNA.

CATEGORY	A	B	C	D
S-I ILS		220 (207-0.8)	550 RVR	
S-I LOC		430 (415-1.6)		
CIRCLING *	650 (635-2.4)		780 (765-4.0)	850 (835-5.0)
ALTERNATE ‡	(1135-4.4)		(1265-6.0)	(1335-7.0)

Changes: 2NM STEP DOWN FIX, Editorial.

BBNII06-178