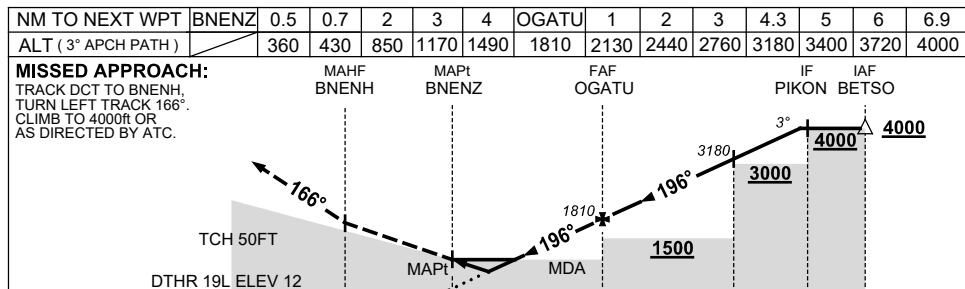
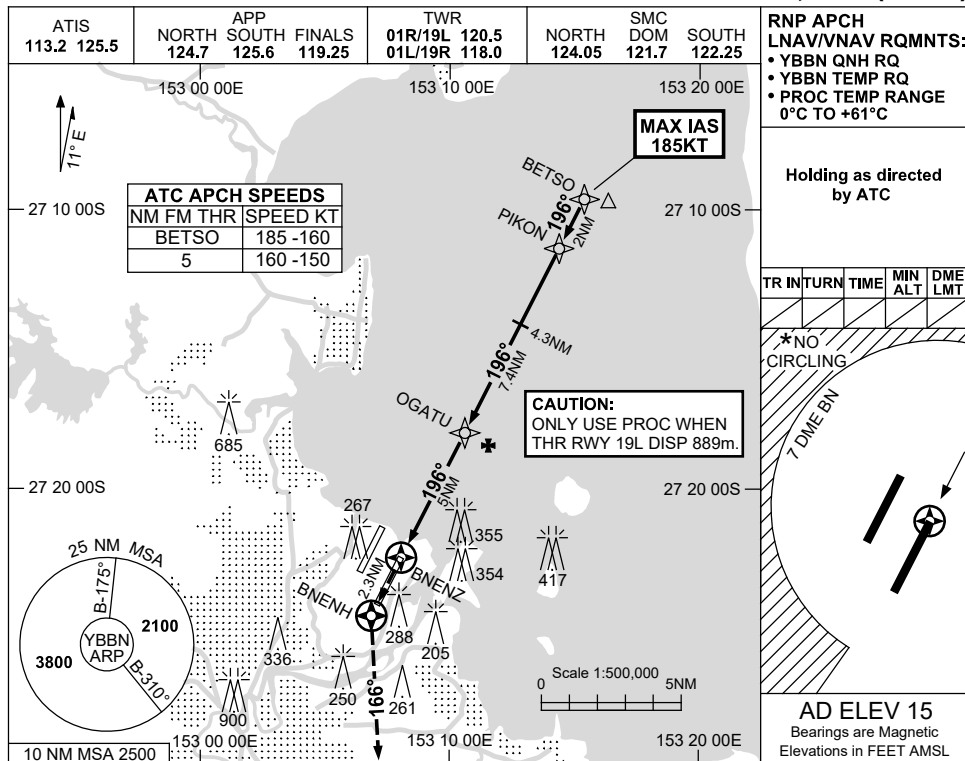


USE QNH

RNP T RWY 19L  
BRISBANE, QLD (YBBN)

21 MAR 2024



**NOTES**

1. MAX IAS: INITIAL : 185KT.
- \* 2. CAT D ACFT NO CIRCLING WEST OF 01R/19L BEYOND 7 DME BN.
3. ACFT MAY BE RADAR VECTORED TO BETSO.

CATEGORY	A	B	C	D
LNAV/VNAV		360 (348-1.9)		
LNAV		430 (415-2.3)		
CIRCLING *	650 (635-2.4)		780 (765-4.0)	850 (835-5.0)
ALTERNATE	(1135-4.4)		(1265-6.0)	(1335-7.0)

Changes: FROM SUP H88/23.

BBNGN05-178