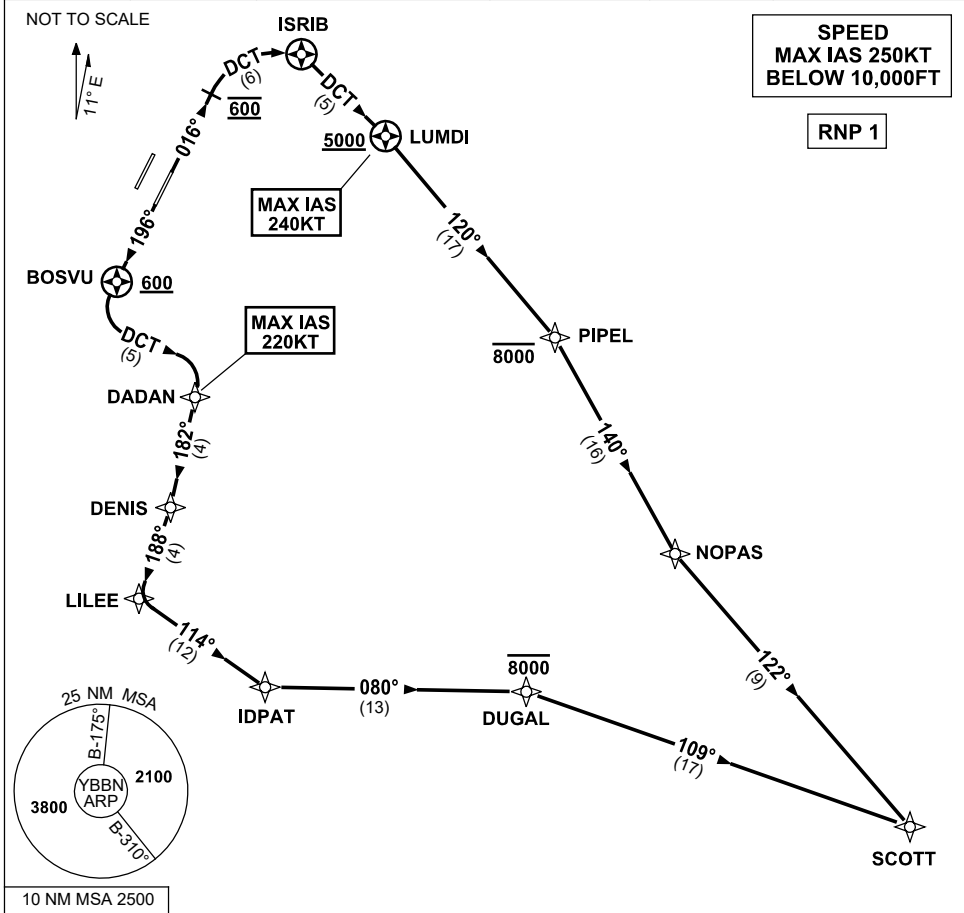


**STANDARD INSTRUMENT DEPARTURES (SID)
SCOTT THREE DEPARTURE (RNAV) RWY 01R/19L
BRISBANE, QLD (YBBN)**

9 SEP 2021

ATIS 113.2 125.5	ACD 118.85	NORTH 124.05	SMC DOM 121.7	SOUTH 122.25	TWR 01R/19L 120.5 01L/19R 118.0	DEP 118.45	Bearings are Magnetic Elevations in FEET AMSL
---------------------	---------------	-----------------	---------------------	-----------------	---------------------------------------	---------------	--



DEPARTURE: SCOTT THREE

RWY 01R

GRAD 3.3% (3.8% TO 4000FT)
MAX IAS 240KT until LUMDI

- Track 016°
- At 600FT turn RIGHT, track DCT to ISIRIB
- Turn RIGHT, track DCT to LUMDI
Cross LUMDI AT or ABV 5000FT
(RQ GRAD TO LUMDI 7.3%)
- Track 120° to PIPEL
Cross PIPEL AT or BLW 8000FT
- Turn RIGHT, track 140° to NOPAS
- Turn LEFT, track 122° to SCOTT

RWY 19L

GRAD 3.3% (5.0% TO 3000FT)
MAX IAS 220KT until DADAN

- Track 196°
- After passing BOSVU **AND** 600FT turn LEFT, track DCT to DADAN
- Turn RIGHT, track 182° to DENIS
- Turn RIGHT, track 188° to LILEE
- Turn LEFT, track 114° to IDPAT
- Turn LEFT, track 080° to DUGAL
Cross DUGAL AT or BLW 8000FT
- Turn RIGHT, track 109° to SCOTT

Changes: Editorial.

BBNDP24-168