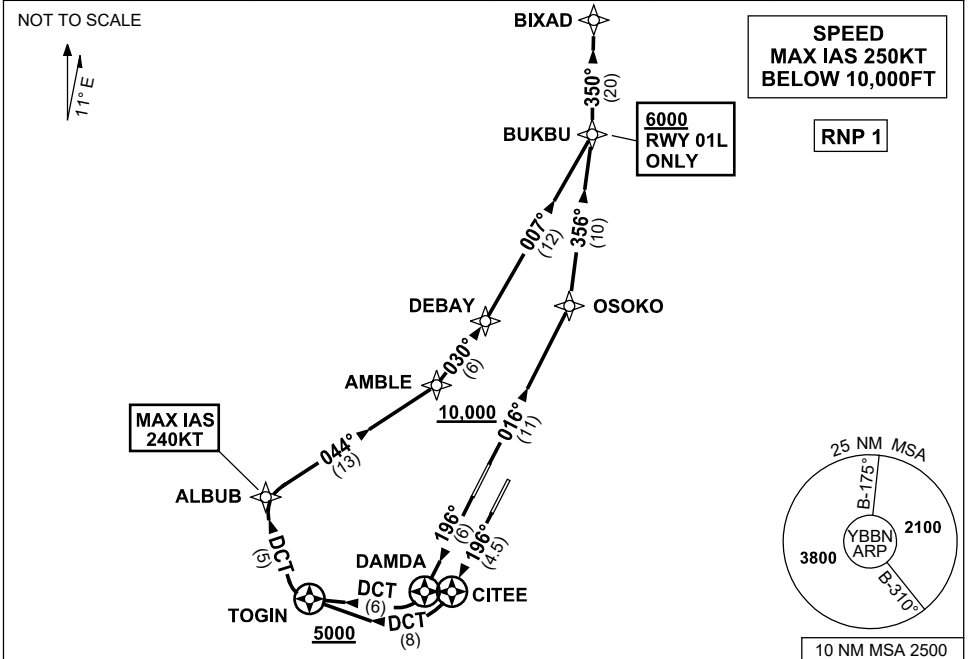


**STANDARD INSTRUMENT DEPARTURES (SID)  
BIXAD ONE DEPARTURE (RNAV) RWY 01L/19L/19R  
BRISBANE, QLD (YBBN)**

9 SEP 2021

ATIS 113.2 125.5	ACD 118.85	NORTH 124.05	SMC DOM 121.7	SOUTH 122.25	TWR 01R/19L 120.5 01L/19R 118.0	DEP 133.45	Bearings are Magnetic Elevations in FEET AMSL
---------------------	---------------	-----------------	---------------------	-----------------	---------------------------------------	---------------	--



**DEPARTURE: BIXAD ONE  
RWY 01L**

- GRAD 3.3% (5.3% TO 3000FT)  
 Track 016° to OSOKO  
 Turn LEFT, track 356° to BUKBU  
 Cross BUKBU AT or ABV 6000FT  
 (RQ GRAD TO BUKBU: 4.7%)  
 Turn LEFT, track 350° to BIXAD,  
 thence as cleared

**RWY 19L**

- GRAD 3.3% (4.5% TO 3000FT)  
 MAX IAS 240KT until ALBUB  
 Track 196° to CITEE  
 Turn RIGHT, track DCT to TOGIN  
 Cross TOGIN AT or ABV 5000FT  
 (RQ GRAD TO TOGIN: 7%)  
 Turn RIGHT, track DCT° to ALBUB  
 Turn RIGHT, track 044° to AMBLE  
 Cross AMBLE AT or ABV 10,000FT  
 (RQ GRAD TO AMBLE: 4.8% FM TOGIN)  
 Turn LEFT, track 030° to DEBAY  
 Turn LEFT, track 007° to BUKBU  
 Turn LEFT, track 350° to BIXAD,  
 thence as cleared

**RWY 19R**

- GRAD 3.3% (4.4% TO 3000FT)  
 MAX IAS 240KT until ALBUB  
 Track 196° to DAMDA  
 Turn RIGHT, track DCT to TOGIN  
 Cross TOGIN AT or ABV 5000FT  
 (RQ GRAD TO TOGIN: 6.9%)  
 Turn RIGHT, track DCT° to ALBUB  
 Turn RIGHT, track 044° to AMBLE  
 Cross AMBLE AT or ABV 10,000FT  
 (RQ GRAD TO AMBLE: 4.8% FM TOGIN)  
 Turn LEFT, track 030° to DEBAY  
 Turn LEFT, track 007° to BUKBU  
 Turn LEFT, track 350° to BIXAD,  
 thence as cleared

Changes: Editorial.

BBNDP18-168