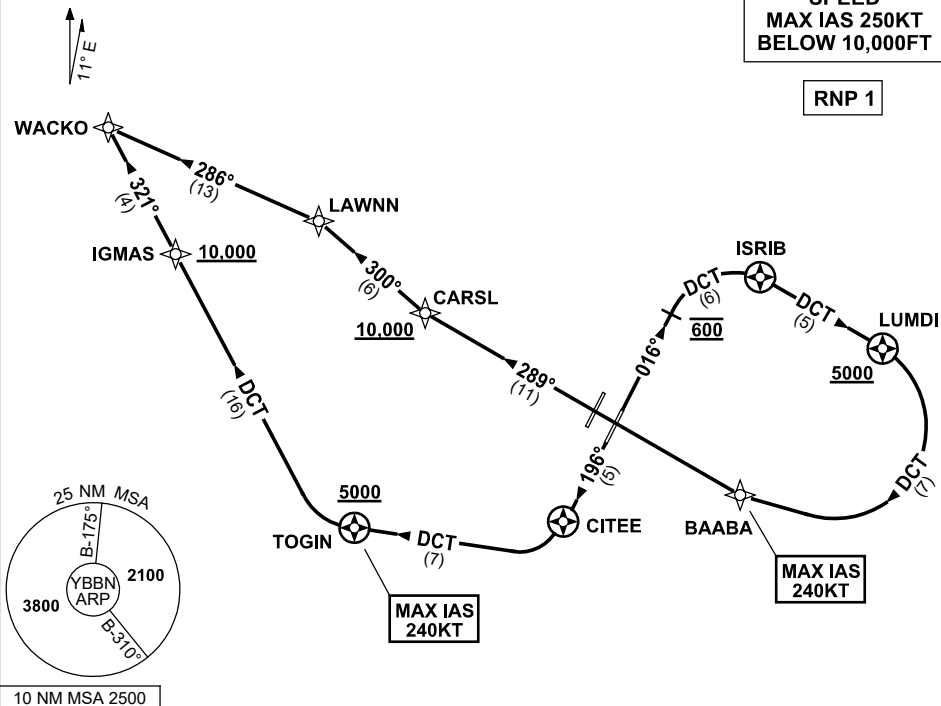


**STANDARD INSTRUMENT DEPARTURES (SID)
WACKO THREE DEPARTURE (RNAV) RWY 01R/19L
BRISBANE, QLD (YBBN)**

24 MAR 2022

ATIS 113.2 125.5	ACD 118.85	NORTH 124.05	SMC DOM 121.7	SOUTH 122.25	TWR 01R/19L 120.5 01L/19R 118.0	DEP 01R 118.45 19L 133.45	Bearings are Magnetic Elevations in FEET AMSL
---------------------	---------------	-----------------	---------------------	-----------------	---------------------------------------	---------------------------------	--

NOT TO SCALE



DEPARTURE: WACKO THREE

RWY 01R

GRAD 3.3% (3.8% TO 2000FT)
MAX IAS 240KT until BAABA

- Track 016°
- At 600FT turn RIGHT, track DCT to ISRIB
- Turn RIGHT, track DCT to LUMDI
Cross LUMDI AT or ABV 5000FT
(RQ GRAD TO LUMDI: 7.3%)
- Turn RIGHT, track DCT to BAABA
- Track 289° to CARSL
Cross CARSL AT or ABV 10,000FT
(RQ GRAD TO CARSL: 4.8% FM LUMDI)
- Turn RIGHT, track 300° to LAWNN
- Turn LEFT, track 286° to WACKO

RWY 19L

GRAD 3.3% (4.5% TO 3000FT)
MAX IAS 240KT until TOGIN

- Track 196° to CITEE
- Turn RIGHT, track DCT to TOGIN
Cross TOGIN AT or ABV 5000FT
(RQ GRAD TO TOGIN: 7.0%)
- Turn RIGHT, track DCT to IGMAS
Cross IGMAS AT or ABV 10,000FT
(RQ GRAD TO IGMAS: 5.0% FM TOGIN)
- Track 321° to WACKO