

STANDARD INSTRUMENT DEPARTURES (SID)
WACKO THREE DEPARTURE (RNAV) RWY 19R
BRISBANE, QLD (YBBN)

13 JUN 2024

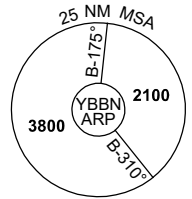
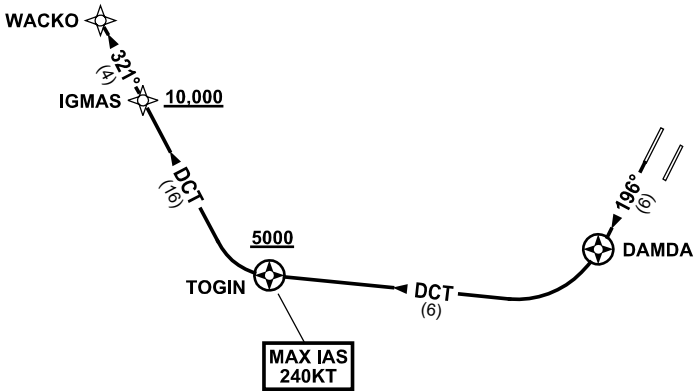
ATIS 113.2 125.5	ACD 118.85	NORTH 124.05	SMC DOM 121.7	SOUTH 122.25	TWR 01L/19R 118.0 01R/19L 120.5	DEP 133.45	Bearings are Magnetic Elevations in FEET AMSL
---------------------	---------------	-----------------	---------------------	-----------------	---------------------------------------	---------------	--

NOT TO SCALE



SPEED
MAX IAS 250KT
BELOW 10,000FT

RNP 1



10 NM MSA 2500

DEPARTURE: WACKO THREE

RWY 19R

GRAD 3.3% (4.4% TO 3000ft)
MAX IAS 240KT UNTIL PASSING TOGIN

- Track 196° to DAMDA
- Turn RIGHT, track DCT to TOGIN
Cross TOGIN AT or ABV 5000ft
(RQ GRAD TO TOGIN: 6.9%)
- Turn RIGHT, track DCT to IGMAS
Cross IGMAS AT or ABV 10,000ft
(RQ GRAD TO IGMAS: 5.0% TO TOGIN)
- Track 321° to WACKO

Changes: RWY 01L DEPARTURE REMOVED.

BBNDP09-179