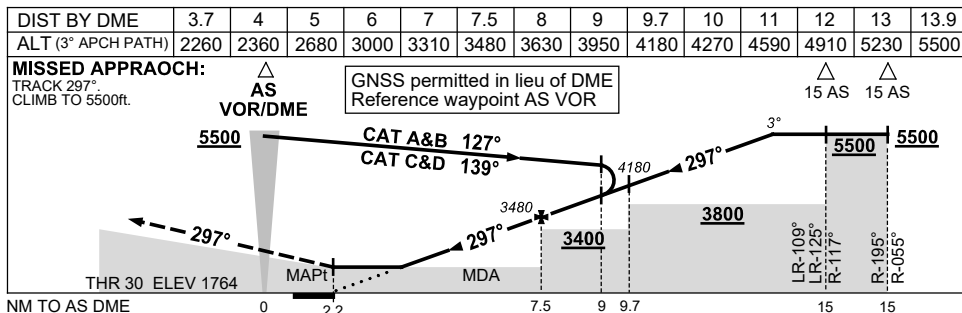
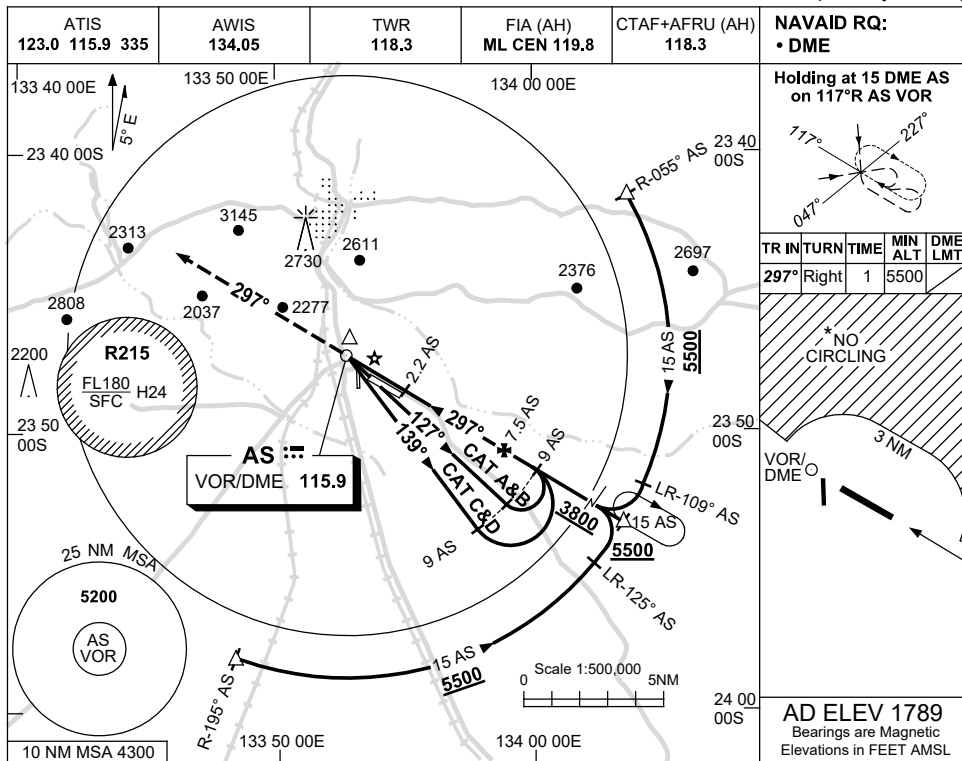


USE QNH

VOR RWY 30

ALICE SPRINGS, NT (YBAS)

13 JUN 2024



**NOTES**

- MAX IAS:  
INITIAL : 210KT.
- SPECIAL ALTN MNM  
800/4.0KM.
- NO CIRCLING N  
OF RWY 12/30  
BEYOND 3NM.
- CTA CONTAINMENT  
NOT ASSURED WHEN  
HOLDING AT OR BLW  
6500FT.

CATEGORY	A	B	C	D
S-I VOR/DME	2260 (496-2.8)			
CIRCLING*	2570 (781-2.4)	2990 (1201-4.0)	2990 (1201-5.0)	
ALTERNATE*	(1281-4.4)	(1701-6.0)	(1701-7.0)	

Changes: NOTE 4.

BASV002-179