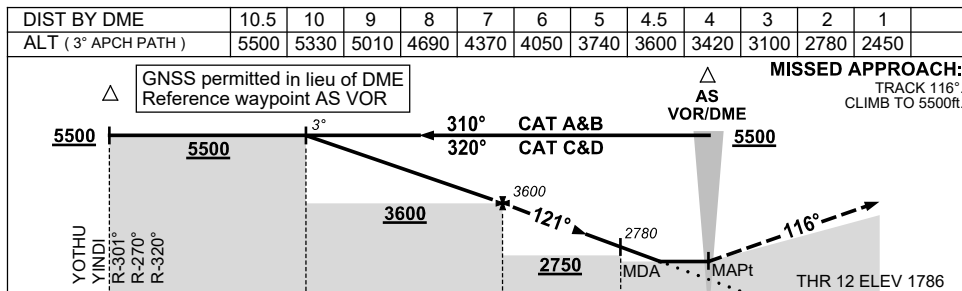
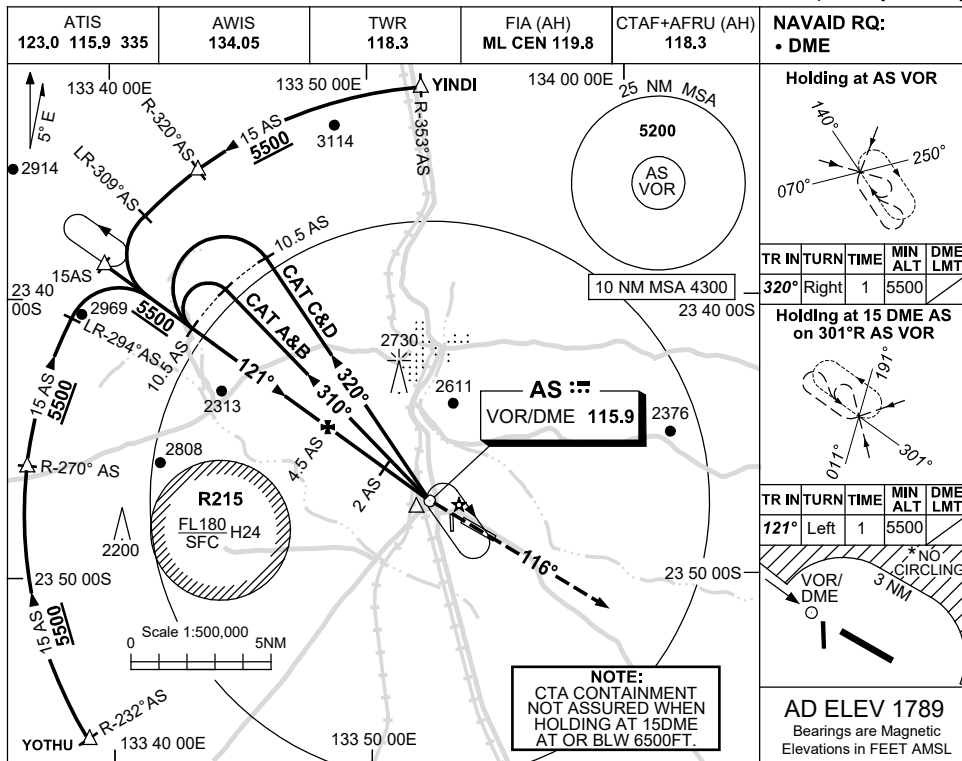


USE QNH

VOR RWY 12

13 JUN 2024

ALICE SPRINGS, NT (YBAS)



CATEGORY	A	B	C	D
S-I VOR/DME	2450 (661-2.9)			
CIRCLING *	2570 (781-2.4)		2990(1201-4.0) 2990(1201-5.0)	
ALTERNATE ‡	(1281-4.4)		(1701-6.0) (1701-7.0)	

- NOTES**
- MAX IAS:
INITIAL : 210KT.
HOLDING: 185KT.
HLDG NOT ABOVE FL120.
 - SPECIAL ALTN MNM 800/4.0KM.
 - NO CIRCLING N OF RWY 12/30 BEYOND 3NM.

Changes: NOTE BOX ADDED.

BASV001-179