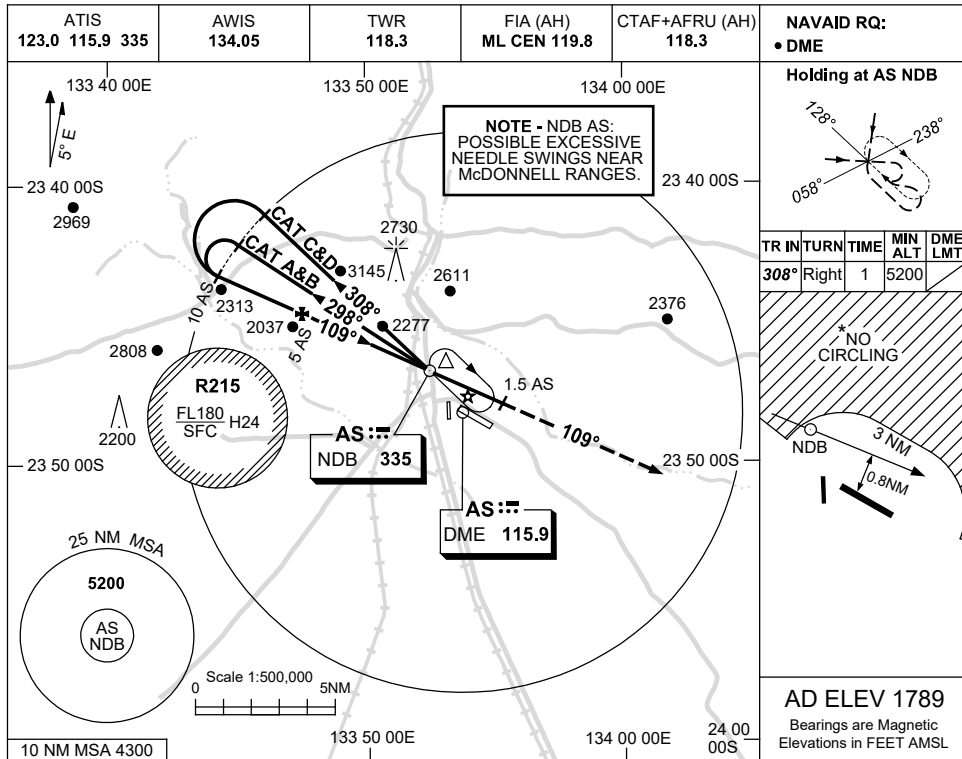


USE QNH

NDB-B

**ALICE SPRINGS, NT (YBAS)**

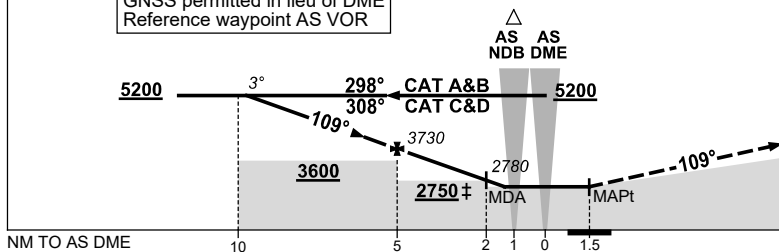
17 JUN 2021



DME DIST	9.6	9	8	7	6	5	4	3	2	1.3			
ALT (3° APCH PATH)	5200	5010	4700	4380	4050	3730	3410	3090	2780	2570			

GNSS permitted in lieu of DME  
Reference waypoint AS VOR

**MISSED APPROACH:**  
TRACK 109°  
CLIMB TO 5200FT.



**NOTES**

- MAX IAS:  
INITIAL : 210KT.  
HOLDING : 210KT.  
HLDG NOT ABOVE FL120.
- CAT C&D ACFT DO NOT DESCEND BLW CIRCLING MINIMA.
- NO CIRCLING N OF RWY 12/30 BEYOND 3NM.

CATEGORY	A	B	C	D
CIRCLING *	2570 (781-2.4)	2990 (1201-4.0)	2990 (1201-5.0)	
ALTERNATE	(1281-4.4)	(1701-6.0)	(1701-7.0)	

Changes: COORD FMT, Editorial.

BASNB02-167